

# LOCAL LINKS



[www.locallinksmedia.co.uk](http://www.locallinksmedia.co.uk)  
[www.facebook.com/locallinksmagazine](http://www.facebook.com/locallinksmagazine)

ISSUE 138  
FREE

## EASY LIFTING

Take care when gardening

## EASTER CHEESECAKE

Create a fun dessert in an easter egg

WIN a **£50** VOUCHER  
from **Dovecliff Hall**

Check out our

## What's On Guide

full of local and community events

Your independent, free local magazine

Delivered free to Branston, Brizlincote Valley, Stretton, Rolleston on Dove & Walton on Trent



# Aspects

at the National Memorial Arboretum

Make memories together at the National Memorial Arboretum, in Aspects, our award-winning events centre, the perfect place to celebrate with family and friends.

With floor-to-ceiling windows framing breath-taking views over our beautiful landscape, modern and relaxing facilities, and talented chefs creating bespoke menus, using fresh local produce, Aspects is the ideal venue to reunite.

Available for use throughout the year for family lunches, quintessential afternoon teas or exclusive evening events, choose Aspects for events that matter in a place that matters.

Call **01283 245 100** or email **[functions@thenma.org.uk](mailto:functions@thenma.org.uk)** to book your event today.

**National Memorial Arboretum**  
Part of The Royal British Legion



Croxall Road, Alrewas,  
Staffordshire DE13 7AR  
**[www.thenma.org.uk](http://www.thenma.org.uk)**

T: 01283 245 100  
E: [functions@thenma.org.uk](mailto:functions@thenma.org.uk)  
Charity No. 1043992



Aspects: Generously funded by The Royal British Legion, the Chancellor using LIBOR funds, the Greater Birmingham & Solihull Local Enterprise Partnership, The Wildlife Environmental Trust and Landfill Communities Fund



# LOCAL LINKS



## ISSUE 138

### SALES

Heather Digby  
Sarah Deakin

### DESIGN

Liona Baldwin

### ACCOUNTS

Jan Evans

**01283 564608**

local@locallinksmedia.co.uk

Local Links Media  
PO Box 8049  
Burton-on-Trent  
DE14 9NQ

www.locallinksmedia.co.uk

facebook.com/  
locallinksmagazine



### CONTRIBUTORS

Including: Angela Sargent,  
Burton Flower Club, The  
Gallery at Ridware, Dovecliff  
Hall, Right at Home, Derby  
Cats Protection

Dear Readers,

*Can you believe it's March already! How have the New Year's resolutions held up? We hope there's some flexibility for easter though... it would be a shame to miss out on all the fun treats like hot-cross buns and easter eggs... and our delicious easter egg cheesecake in this issue! Yum! If you have a go, why not share a pic with us on our facebook page: [www.facebook.com/locallinksmagazine](http://www.facebook.com/locallinksmagazine)*

*We hope you enjoy this Easter issue and hope you've got some lovely things planned over the long weekend. If you're out and about shopping or lunching, why not choose local businesses and coffee shops instead of big multi-national chains? Read more about how supporting local business owners can help our area on page 27.*

Happy Easter!

The **LOCAL LINKS** team

**niche**  
architecture

- Extensions ■ Conversions ■ Commercial Buildings
- New Builds ■ Self Builds
- Planning Applications ■ Building Regulations

**Call us on 01283 499451**

[www.nichearchitecture.co.uk](http://www.nichearchitecture.co.uk)

[enquiries@nichearchitecture.co.uk](mailto:enquiries@nichearchitecture.co.uk)



**Next issue deadline:**

Tues 7th April

**Next issue out from:**

Wed 15th April

This magazine  
delivered free to:

Branston,  
Brizlincote Valley,  
Rolleston,  
Stretton &  
Walton on Trent

We also deliver a  
magazine free to:

Alrewas,  
Barton,  
Fradley,  
Rangemore,  
Tatenhill &  
Yoxall

**DISCLAIMER** - The accuracy or content of any advertisement is not warranted by Local Links Media, nor do Local Links Media endorse or guarantee any of the products or services advertised, except any advertisement expressly relating to our services. We are not to be held responsible for any inaccuracies in the adverts nor to any consequences arising from inaccuracies. We are not to be held responsible for error in printing, damage or loss. It is the advertisers responsibility to ensure conformity with the Trades Descriptions Act 1975; Business Advertisements Disclosure 1977; Sex Discrimination Act 1975; and consumer Credit Act 1974. All artwork created by Local Links Media remains the property of Local Links Media and therefore must not be used in any other media without permission, as this is a breach of copyright laws.



**Simon Richardson**  
Legal Services  
Limited



Former partner and head of private client services at Smith Partnership with over 30 years' experience in all areas of the law, latterly specialising in:

- Advice on protecting against care fees and inheritance tax
- Wills
- Lasting Powers of Attorney
- Administration of deceased estates including contested estates
- Property matters including disputes
- Appointments available 7 days a week, within and outside office hours

**Telephone: 07495 491328**  
**or E-mail: richsdr@aol.com**

Consultations available at your home for no extra charge

**LAW**

**FAULTY OR BROKEN  
UPVC LOCKS?  
CALL THE EXPERTS**

Friendly, professional, experienced  
Local Burton company, established for 16 years

We fit, open, repair or upgrade all:

- uPvc type locks
- Wooden door locks, mortice etc
- Aluminium door locks
- Window locks
- Composite door locks
- Garage door locks

**Access Locksmiths**  
**01283 686123**

All work fully guaranteed  
Read our 5\* reviews on Yell and Google



[www.access-locksmith.co.uk](http://www.access-locksmith.co.uk)



**Loose Wobbly Dentures?**  
**WE CAN HELP!**

ROCK SOLID OPTIONS FOR LOOSE DENTURES...



**Bespoke High Suction Denture**



**Implanted Denture**



**Same Day Implanted Teeth**

Derby  
**01332 896875**  
Burton on Trent  
**01283 809679**

Book your **FREE "loose denture"**  
consultation today!

**BEAUTIFUL DENTURES**

Coalville  
**01530 886209**  
Wolverhampton  
**01902 275575**

[www.beautifuldentures.co.uk](http://www.beautifuldentures.co.uk)

# ART CLASS STARTS SOON

**ABSOLUTE BEGINNERS TO IMPROVERS WILL LOVE THIS COURSE!**



**GREAT NEWS** if you're looking for something fun to do over the next few months! We are now taking enquiries for a **NEW 14 week part-time Art Class** (once a week for three hours), which starts soon in your area.

## **Absolute Beginners to Improvers - Just Like You!**

The course is designed to be fun for absolute beginners who have never picked up a brush before, through to improvers.

## **Step-by-Step Guidance**

We adapt to each student's needs and give them all the guidance and help they need to develop their artistic skills. The curriculum is fun, comprehensive and interesting. Over the course we

will explore four different media; pencil drawing & sketching, oil pastel painting and techniques, painting and blending with water colours and acrylics. Step-by-step tuition in the basic techniques and secrets needed to create beautiful pieces of art.

## **Fun, Easy Classes**

Learn to draw faces, friends, family, pets in the first few weeks. We make it fun and easy for you.

## **Young at Heart**

Learn new skills you will enjoy forever, meet new friends and to have a fun experience you will always remember! It's open to adults of all ages and runs over 3 months - plenty of time to master your new hobby.

## **Limited Places**

To maintain our high standards of tuition, classes are restricted to small numbers - so places are limited!

For information on dates, course fees and bookings, call now on

**01283 562 527**

The Seasons  
Art Class

**BRING OUT YOUR  
INNER ARTIST**

# YOUR NEW ART CLASS

Step by step lessons suitable for absolute beginners or improvers. Acquire the skills you need to produce paintings you can be proud of!

- Absolute Beginners to Improvers - Just Like You
- 14 week course
- Three hours once a week, mornings or afternoons
- Step-by-step guidance
- Meet New Friends, Learn New Skills
- Develop your skills and create your own original art to enjoy forever

Learn new skills and make new friends

**Riverside Hotel, Burton on Trent**  
**NEW COURSE NOW TAKING ENQUIRIES**

**CALL NOW FOR DETAILS**

**01283 562 527**

12/03/15

# PAINTER & DECORATORS

- High Class Finish
- Competitive Prices
- Friendly, Reliable Service
- Free Quotations



Contact Michael



**07979 921895**



**01283 362279**

e-mail: [mgdecorator@yahoo.co.uk](mailto:mgdecorator@yahoo.co.uk)

44 Hurst Drive, Stretton, Burton upon Trent, DE13 0ED



# SHOWERS

**INSTALLED - REPAIRED - REPLACED**

- Replace your bath with an easy access walk-in shower
- Cubicles - Doors - Trays
- Electric showers & power showers

**Approved installer of 30 years**

Call Alan Wright Showers on

**01283 815171**

**01332 290198**



# Dirty Oven?



**Karen's** £5 Off Promotion\*  
**Ovengleam**

Ovens, Hobs, Agas,  
 Microwave Ovens,  
 Range Cookers,  
 Cooker Hood  
 Extractors, etc.

Biodegradable, fume free,  
 non corrosive.

**Spectacular Results!**

Find us on Facebook  
[www.facebook.com/karensovengleam](http://www.facebook.com/karensovengleam)

**01283 500065**

[www.karensovengleam.com](http://www.karensovengleam.com)  
 Your Local Oven Cleaning Specialist  
 \*Terms and Conditions apply. See [www.karensovengleam.com](http://www.karensovengleam.com)



# BLAKENHALL PARK

High Quality modern Offices, Storage and Containers in beautiful rural settings

## Fed up with the city? GO GREEN!

- Enjoy Barn Converted offices with original features
- Benefit from ample parking for your staff and visitors
- Secure site with CCTV • Comfort heating/air conditioning
- Flexible container/storage options




[www.blakenhallpark.co.uk](http://www.blakenhallpark.co.uk)


Blakenhall Park, Barton under Needwood, Burton on Trent, DE13 8AJ.  
 Tel: 01283 713 901 Email: [info@blakenhallpark.co.uk](mailto:info@blakenhallpark.co.uk)

# GAROLLA

**ROLLER SHUTTER DOORS**



## THERMALLY INSULATED ELECTRIC GARAGE DOORS



CE Approved


Acoustic & Thermal Insulation


Brush Sealed Rails

Pay on Completion

Two Remote Controls

18 Colours Available





Free Disposal of your Old Door!

**Great For:**  
 Space Saving  
 Kerb Appeal  
 Ease of Use

**0800 468 1982**

Save  
**£459**

**LIMITED OFFER - was £1354**  
**NOW ONLY £895**  
**INC. VAT & FULL FITTING**  
 MADE TO MEASURE, CALL US TODAY

**01283 430 233** **07537 149 128**

Phone Lines Open 7 Days a Week

\* Offer valid for openings up to 2.6m wide & inc: 2 Remote Keys, 55mm White slats, Internal manual Override -

# Smarter Safety

It can be hard to know how to talk to your child about online safety. From setting up parental controls to advice on sexting, online games and video apps, we can help you to understand the risks and keep your child safe.

## Create a safe space to talk.

Talking regularly, like you would about their day at school, will help your child feel relaxed and mean that when they do have any worries, they're more likely to come and speak to you. It can help to:

- reassure them that you're interested in their life, offline and online.
- recognise that they'll be using the internet to research homework as well talking to their friends.
- ask your child to show you what they enjoy doing online or apps they're using so you can understand them.
- be positive but also open about anything you're worried about. You could say "I think this site's really good" or "I'm a little worried about things I've seen here."
- ask them if they're worried about anything, and let them know they can come to you.
- ask them about their friends online and how they know they are who they say they are.
- listen for the reasons why your child wants to use apps or site you don't think are

suitable, so you can talk about these together.

- ask your child what they think is okay for children of different ages so they feel involved in the decision making.

## How can I make use safer?

All mobile phone providers offer free parental control services which limit the content children can access via the internet to content suitable for under 18s. However, they may not always be automatically switched on. Check with your service provider that the parental control settings are switched on, and ask for them to be switched on if they are not. You should be able to do this via your account settings on your provider's website.

## Stay safer offline.

There are several apps available to track your child's movements, a great free one is 'Hollie Guard'.

If your child is in danger they can shake their phone or tap the screen to generate an alert. Their location and audio/video evidence will automatically be sent to emergency contacts who can take action to help them quickly.

The Journey feature allows your child to notify you of their movements while traveling. Enter your start and end point, and an SMS & email will be sent to your emergency contacts when you've started and safely completed your journey.

To register for a FREE account and for more information visit [www.hollieguard.org](http://www.hollieguard.org).

Hollie Guard was developed by the Hollie Gazzard Trust (HGT) to help people stay safe. HGT supports young hairdressers and charities fighting domestic abuse and anti-knife crime. The app was created in honour of Hollie Gazzard, a hairdresser who lost her life to domestic violence.



# TIME TO RECLAIM YOUR LOFT SPACE

We are specialists in installing loft ladders and hatches for easy and safe access to your loft. We also provide boarding, lighting and insulation solutions. This "Spring Clean" time we can help you turn your lost space into really useful loft space.



## WHAT MAKES US DIFFERENT

- No waiting around. We arrive on time, every time
- Minimum 5 year guarantee on all our ladders
- Reliable, local company working in your home
- Extra confidence because we are accredited by Which? Trusted Traders
- Absolutely no mess and no fuss



Call Sam to book a FREE survey & quotation

# 01785 595146

[WWW.ACCESS4LOFTS.CO.UK](http://WWW.ACCESS4LOFTS.CO.UK)

## Midland Property Maintenance

- ALL TYPES OF ROOF REPAIRS
- EXTERIOR DECORATING
- UPVC FACIAS SOFITS
- GUTTERING
- JET WASHING DRIVES PATIOS
- FACIA'S & GUTTERING

*We are a family run business with  
over 25 years experience.*

**FOR A FREE QUOTE CALL:**  
**01283 310885 or 07413582565**



## Meadowview

GARDEN SERVICES

- ✓ Tree services
- ✓ Hedge maintenance
- ✓ Grass mowing
- ✓ Garden clearance
- ✓ Ground maintenance
- ✓ Full waste carriers licence
  - ✓ Planting
  - ✓ Woodchip
  - ✓ Logs for sale
  - ✓ Fully insured



M: 07835 218 041 T: 01283 763572  
E: [gt.meadowview@gmail.com](mailto:gt.meadowview@gmail.com)  
W: [www.meadowviewgardenservices.co.uk](http://www.meadowviewgardenservices.co.uk)



# Pom-Pom Easter Bunnies



Nothing says easter more than a cute little fluffy bunny. So we thought it would be super fun to share this little pom pom bunny make with you!

## You will need:

Small amount of black, grey and pink felt  
Small amount of fabric glue  
Scissors  
Ball of grey wool  
Glue gun

## Method:

- Make two grey pom-poms, one smaller than the other and a small white pom-pom using the method here, following steps 1 - 10 (see right).



- Use the hot glue gun to stick the smaller grey pom-pom (the head) to the larger one (the body) and then the small white pom-pom (the tail) to the larger grey pom-pom.

- Cut two ear shapes out of the grey felt and a smaller ear shape of

## HOW TO MAKE Pom Poms



pink felt and glue on top of the grey. Glue and pinch at the bottom to finish the ears and then glue to the top of the bunny's head.

- Cut two small circles out of the black felt for eyes and a small circle out of the pink felt for a nose. Stick to the bunny's face with fabric glue.
- If you want to, why not make some funny accessories for your bunnies to wear!

We'd love to see your attempts at making these cute little critters, so why not share them with us on our facebook page at: [www.facebook.com/locallinksmagazine](http://www.facebook.com/locallinksmagazine)





## You can rely on a Worcester...

The only gas boiler manufacturer to be awarded **Which? Best Buy** for six years running!

...and you can rely on **Bosco Heating** to install them.

10

MONTHS

INTEREST-FREE FINANCE  
ON NEW WORCESTER BOILERS

**WORCESTER**  
Bosch Group  
Accredited Installer




- Heating repairs
- Replacement radiators etc.
- Leaking pipes repaired
- Controls replaced

- New taps & general plumbing repairs
- Free quotations & no call out charge\*
- Gas safety inspections & certificates
- and much more!...

\*excludes diagnostic work



W: [WWW.BCOSYHEATING.CO.UK](http://WWW.BCOSYHEATING.CO.UK)  
E: [SERVICE@BCOSYHEATING.CO.UK](mailto:SERVICE@BCOSYHEATING.CO.UK)

01283 713592

## M C B Electrical

OVER 25 YEARS EXPERIENCE



- Rewires, New Builds, Extensions
- Consumer Unit Upgrades
- Showers, Cookers, Heating
- Sockets & Telephone points
- Internal / External lighting
- Testing & Inspecting
- Fully Insured & Compliant to IEE Regs



Free, Friendly, No Obligation Quote  
**Tel: 01283 532074**  
 Mob: 07890 003 979  
 Email: [m.c.b.electrical@btinternet.com](mailto:m.c.b.electrical@btinternet.com)  
 Web: [www.electriciansinburtonupontrent.co.uk](http://www.electriciansinburtonupontrent.co.uk)  
 5 Nicklaus Close, Branston, Burton on Trent, Staffordshire DE14 3HP

## Has Your Double Glazing Steamed Up?

All Glazing Backed By Our

# 25 YEAR GUARANTEE

Priority Freephone

## 0800 61 21 118



REPLACING YOUR FAILED DOUBLE GLAZING



[www.cloudy2clear.com](http://www.cloudy2clear.com)



# By The Barn *by Angela Sargent*



**B**rimstone butterflies glowing against early bright green leaves are a wonderful spring sight, if you're lucky enough to spot one this March. The caterpillars feed on buckthorn and Alder and you might spot them along roadsides and hedges.

When out walking, now is the month to spot hares racing and boxing in the open fields - this is the time they come together

(being a naturally solitary animal) to breed. Persecuted by coursing, in which big money is invested, in the more eastern counties, the hare is declining in some areas. Because of successful police action in Lincolnshire, it has driven the practise further afield and a lot of damage is done to farmland at the same time.

Much of our pasture has begun to grow, although some will take time to recover from the autumn/winter wet weather and farmers will be fertilising and rolling where they can, giving the tender growth some much needed tlc and feed.

Grass is an important crop

- the newer varieties being much more nutritious for high yielding livestock - full of energy converted from sunshine, eaten by animals and converted into milk or muscle. We are so good at growing grass in this country - we have ideal weather and a lot of land that cannot grow anything else.

Grass varieties can outgrow themselves and then it's time to plough them up and resow, what we call a 'ley'. Arable crops do well when they follow a grass ley.

Follow angela on twitter @  
**bythebarn**

THE  
**ALPHABET**  
GIFT SHOP

*Uniquely Personalised  
Gifts and  
Cosy Coffee Shops*

[www.thealphabetgiftshop.co.uk](http://www.thealphabetgiftshop.co.uk)

9-10 Union Street, Burton  
DE14 1AA T: 01283 749933  
OPEN Mon-Fri 8.30 - 5.30,  
Sat 9-5.30, Sun 10 - 4pm



# Cash4Clothes4You

Bring your bags to our Burton depot  
Best prices in the area!

Burton Upon Trent  
Unit 2  
Manor Trading Estate  
Hawkins Lane  
Burton Upon Trent  
DE14 1QX



£4.50 per 10  
Limos  
Guaranteed over the  
best deals

## YES PLEASE

- ✓ Clean wearable clothes
- ✓ Bags, belts, hats
- ✓ Pairs of shoes

## NO THANKS

- ✗ Soiled or damp clothes
- ✗ Duvs and Pillows
- ✗ Work clothes or bagged school uniform

Opening hours:  
Mon - Sat 10am till 5pm  
For enquiries or  
collections please call  
01283 480711  
Free and easy parking

Like us on Facebook please:  
Cash4clothes4you



# Cash4Clothes4You



## Tiny Toez

East Staffordshire  
Children's Centre  
Waterloo Street  
Burton on Trent  
Staffordshire  
DE14 2NJ

- Staffed by fully qualified, experienced, dedicated professionals in childcare.
- FREE places available for 2\*, 3 and 4 year olds
- 'Good' OFSTED report.
- Meals freshly prepared on site
- 30 free hours funding accepted

## SPECIAL OFFER! BABIES ONLY\*

One month free childcare for 0-2 year olds.

\*Terms & conditions apply

For more information call  
Manager Christine Leeman on:  
Telephone - 01283 741343 or  
Email - eaststaffs@tinytoez.com  
www.tinytoez.com

## Architectural Design

niche  
architecture



Before



After



Before

After



Interior



Before



After

Call us on 01283 499451  
www.nichearchitecture.co.uk  
enquiries@nichearchitecture.co.uk

Facebook: @NicheArchitectureLtd  
Instagram: nichearchitecture  
Twitter: nichearch

# Arranging Nature *by Barbara Buxton*

**A**s we slip into spring there are a beautiful array of seasonal flowers becoming available. Do you buy a bunch and aren't entirely sure about how to care for them properly and arrange them beautifully? Here are some super tips from Barbara Buxton of Burton Flower Club. Barbara advises...

## Buying your flowers

Whether you buy your cut flowers from a Florist or Supermarket avoid those displayed near fruit, in sunlight, draughts or open to the elements. They need to be fresh with crisp stems, foliage not wilting or turning yellow or brown. Daisy type flowers should have tight greenish centres and Carnations open with no white "threads" showing.

## Help your flowers live longer

Some guidelines are necessary to promote the life of your flowers. All your containers, scissors and secateurs must be scrupulously clean to avoid bacteria developing and entering the cut surface of the flowers/foliage. Also, make sure that your scissors and secateurs are sharp to avoid damage to the stems.

## Basic conditioning

Cut approx. 2.5cms off strong flower stems (e.g. Roses)

at an acute angle to enable the flower to take up water efficiently, remove all lower leaves that will be below the water line because they will encourage bacterial growth. Make a vertical slit and scrape the bark for about 2.5cms on stems of woody foliage, place flowers and foliage in buckets of deep, tepid water.

Soft fleshy stems (e.g. Tulips) need shallow water.

Don't forget to add cut flower food to both woody and soft stemmed arrangements.

As always there are some exceptions to these guidelines but treating your flowers this way should suit most types of flowers. Now let's progress to containers...

## Choosing your container

The flowers and container should combine so that one doesn't dominate the other. Consider where the flower filled container will be placed so that it has enough space, be it a jam jar, cup and saucer or even a juice carton!

## Help with stability

You can use various mechanics to help stabilise stems such as floral foam, pin holder, wire, pebbles etc. If you're interested in a simple seasonal

display without the need to use these, at the moment you can buy a bunch of Daffodils and arrange in a glass jar together with some stems of Pussy Willow or Catkins for added interest.

## Watering

Remember to top up the water using a long spouted can to avoid disrupting your arrangement.

Most importantly ENJOY!

If you're inspired to give flower arranging a go, why not pop along to a local flower arranging club, such as: Burton Flower Club, they meet at the Priory Centre on Church Road in Stretton on the first Friday of most months at 7.30pm. They are very welcoming to visitors and new members. Why not give them a call to find out more: 01283 814800 / 01283 704180.



# Complete Construction & Maintenance Midlands Ltd

Building & Joinery Contractors  
Extensions & Alterations  
Kitchens & Bathrooms  
Tiling & Natural Stone  
Windows, Doors and Conservatories  
Drives, Patios and Fencing  
Plumbing, Heating & Electrical  
Property Maintenance

231 Woodland Road, Stanton

07980110320



For all children aged from 0 to 100 yrs!  
Great family fun for all Generations  
to enjoy together on our narrowboat

Barton Marina, Barton under Needwood. DE13 8AS  
Tel: 01283 711341 [www.themugtug.co.uk](http://www.themugtug.co.uk)

## LADY PLUMBER

### *A Pipe Dream*

A Pipe Dream provides a full range of all plumbing and heating services - from installing the bathroom suite of your dreams, replacing your boiler, to fixing that leaking joint that has been bothering you for ages!

If you need a fully qualified plumber or gas engineer you can trust, give Abi a call.



T: 01283 716 352

M: 07976 705 189

[www.apipedream.co.uk](http://www.apipedream.co.uk)



# Easter Egg Cheesecake

This is truly the most perfect and easy no-bake cheesecake. By following this no-bake cheesecake recipe, you'll be gifted with a smooth and creamy dessert that sets beautifully in the refrigerator. Unlike regular cheesecake, no-bake cheesecake isn't overly heavy. It's lightly sweet and perfectly refreshing!

## EASTER EGG CHEESECAKE

### Ingredients

3 x small easter eggs (15cm tall)  
3 bags mini eggs (half crushed and half left whole)  
3 creme eggs  
200g digestive biscuit crumbs  
67g light brown sugar  
115g unsalted butter, melted  
300ml whipping cream  
680g full-fat cream cheese, softened to room temperature  
100g granulated sugar  
15g icing sugar  
60g sour cream, at room temperature  
1 teaspoon pure vanilla extract

### Instructions

Cut your three easter eggs in half top to bottom along the seam. If the eggs are well stuck together heat a knife blade up in boiling water to separate the halves.

Stir the digestive crumbs, brown sugar and melted butter together and divide into the bottom of each easter egg half. Gently compact with a spoon being careful not to crack the easter egg shell.

Freeze for 10-20 minutes as you prepare the filling.

Using a hand mixer or a stand mixer fitted with a whisk attachment, whip the cold heavy cream into stiff peaks on medium-high speed, about 4-5 minutes. Set aside.

Whisk the cream cheese and granulated sugar together on medium speed until perfectly smooth and creamy. Add the icing sugar, sour cream and vanilla extract. Beat for 2-3 minutes on medium-high speed until smooth and combined. Stir in the crushed half of the mini eggs.

Using a spatula, slowly fold the whipped cream into the cheesecake filling until combined.

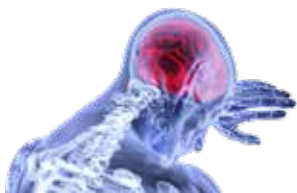
Remove the egg halves from the freezer and spread filling into them.

Refrigerate for at least 6-8 hours and up to 2 days. For best results, 12 hours is best. Don't be tempted to cheat this step otherwise they won't be set.

When ready to eat, decorate each egg cheesecake with the remaining whole mini eggs. Use a hot knife to cut the creme eggs in half lengthways and place on top.



# How to Detect & Prevent Strokes



In the next six seconds, someone in the world will have a stroke. Are you among those at highest risk? A stroke occurs when a blood vessel in the brain ruptures or is blocked by a clot. The blockage or bleeding deprives brain cells of adequate oxygen-carrying blood and cells start to die, which can lead to ongoing mental and physical impairment (difficulty thinking, speaking and moving) or even death.

If a person shows signs of a stroke, it is crucial to seek medical help immediately. Never wait to see if symptoms lessen. Signs of a stroke include the following:

- Sudden weakness, numbness or paralysis of the face, arm or leg, often on one side of the body.
- Sudden trouble speaking or understanding;
- Sudden vision problems in one or both eyes.
- Sudden difficulty walking, dizziness or loss of balance.
- Sudden severe headache with no known cause.

Older adults experience more strokes, often because they

face more cardiovascular disease and are more sedentary. To reduce the risk of a stroke, particularly in ageing loved ones, follow these recommendations:

- Eat a healthier diet.
- Manage blood pressure.
- Maintain physical activity.
- Lose extra weight.
- Lower cholesterol levels.
- Reduce blood sugar.
- Avoid smoking.

To learn more about stroke prevention and resources to help a stroke survivor, contact the Stroke Association, a medical facility or a Right at Home office nearest you.

Visit Right at Home on the web: [www.rightathomeuk.co.uk](http://www.rightathomeuk.co.uk)

## D-I-Why?

**from as little as £15**

**01283 735675**

**GreenThumb**  
LAWN TREATMENT SERVICE

**Find us online at: [www.greenthumb.co.uk](http://www.greenthumb.co.uk)**

GreenThumb's annual treatments ensure your lawn looks lush, green and healthy. With prices starting from £15 per treatment, your lawn nightmare will soon be history.



## Newdec ADAPTATIONS

We specialize in wetrooms, bathroom adaptations and kitchens for the elderly and disabled. Approved installer of the all new

geberit mera care wash and dry toilet. Adapting your home to your needs.

All enquiries please contact  
[newdecinteriors@btconnect.com](mailto:newdecinteriors@btconnect.com) or call us on:

**01283 569692**

Established 2002. We work for most local authorities.

Head office Address: Unit 4, Greenline  
Business Park, Wellington Street,  
Burton on Trent, DE14 2AS

Showroom Opening Hours:

Monday 9.30 - 15.00 | Tuesday 9.30 - 15.00  
Thursday 9.30 - 15.00 | Friday 9.30 - 15.00

## Barton DRIVEWAY CLEANING

Professional Driveway Maintenance.

Why not have your drive or patio restored to its original condition?

- All surfaces as good as new!
- High power pressure wash
- Low pressure soft wash
- Removal of slippery moss & weeds
- Fully insured
- No mess
- Local Barton resident

**CALL RICHARD ON: 07949 237 305**



# Dry Carpet Cleaning

zero(dry)time<sup>TM</sup>

Dry Carpet, Upholstery & Hard Floor Cleaners

- Removes spills & spots
- Sanitize & deodorise
- Deep cleans & lifts carpet pile



**Locally based**

You can call us for FREE on

**0800 180 49 30**

[zerodrytime.com](http://zerodrytime.com)

**FREE**  
Carpet Clean with any  
3 Piece Suite Clean  
+ Free Stain Protection

We also clean hard floors, tiles inc Grout, Karndean, Amtico and Wooden floors - Ask for a quote





**TOP**  
FURNITURE

VISIT US AT STATION ROAD, UTOXETER, ST14 8AX  
WWW.TOPFURNITURE.CO.UK • TEL - 01889 560999

**BIN IT SKIPS**



All Sizes  
All Areas  
Great Prices

**01283 716615**  
**WWW.BINITSKIPS.CO.UK**

**TURN YOUR LOFT INTO A Safe, Surefooted, Space**



**LOFT LADDERS...**



**LOFT FLOORING...**



**LOFT LIGHTING...**

"Massive thanks... wonderful job. What had been a dirty and unusable space for the last 10 years... is now light, safe and absolutely HUGE!!"

**Plus FREE FITTING in less than a day!**  
**ALL EXPERTLY FITTED, FULLY GUARANTEED**

From as little as...  
**£297 +VAT**



Over 10,000 people have chosen us to fit their loft ladder, this is because we offer:

- A large selection of ladders to choose from
- A FREE home visit
- A FREE written quotation
- Fully guaranteed

Call us now on:  
**0800 035 9880**  
or  
**01332 800411**  
Or visit  
[www.morethanloftladders.co.uk](http://www.morethanloftladders.co.uk)

**more loft than ladders**  
"most effective space"

# Easy Lifting

**N**ow that spring is well and truly on the way, many of us will be outside in the garden in an attempt to getting things tidy and freshened up for the summer months. There are lots of jobs to do this time of year but don't be too gung-ho or you could end up doing yourself a mischief!

## Typical Gardening Aches and Pains

The most common gardening related complaints are back pain or pain in the knees or hands. This is no surprise given the repetitive tasks, sustained bending, frequent lifting and awkward positioning that is involved in this popular hobby. This doesn't mean that you have to give up on the pleasures of watching your garden bloom this summer as long as you...

## Lift Heavy Items Safely

A common cause of low back pain while gardening is poor lifting technique. Whether you're lugging new plants in

from your car or carrying bags of fertilizer all around the yard, your primary focus should be maintaining safe body mechanics. Here are some tips to keep your back safe while lifting outdoors:

Start with a wide base of support – Stand with your feet hips distance apart. Closer or further away makes you more unstable.

Now, squat down, bending at hips and knees, and keeping your back long – Your safest posture is to keep your spine in a neutral position. Straight back, open chest, and shoulders back and down.

Once you have established a stable base, start to lift slowly and avoid quick, jerky movements – Engage your core muscles by drawing your navel towards your spine to support your lower back.

Bring the load as close to your body as possible – Minimize

the force required to lift or carry the object.

Slowly begin to straighten your legs – Remember that your leg muscles are stronger than your back so be sure to generate force with your lower body.

Avoid twisting or turning at the waist while carrying something heavy – If you do need to change direction use your feet rather than rotating through your spine.

Make Gardening Safer by:

- Easing into gardening. Gradually increase the amount of time you spend working in the garden just as you would with any sport or activity that you haven't practiced in several months.
- Take frequent breaks and change positions frequently (every 10-15 minutes).
- Remember to get closer to what you're doing; kneel to plant and weed or if you have knee or hip pain try sitting on an upside down bucket or gardening bench.
- Elevate your flower beds and containers so you can tend to them at a comfortable height. Raised garden beds reduce the amount of reaching, bending, and twisting required which can all be contributors to aches and pains.

# Don't worry about your property disputes

Specialising in litigation, we can advise you in property disputes in an easy to understand and practical manner. We understand it can be worrying and, as experts in this field, we are here to make it as stress-free as possible for you.

Call our team on 01283 531366 to see how we can support you.

99% customer  
satisfaction



**01283 531366**  
astlepaterson.co.uk

**Liam O'Shea**  
Head of Litigation &  
Dispute Resolution



## TRUSTED CARE & COMPANIONSHIP IN YOUR OWN HOME

### Our services include:

- Companionship and support
- Specialist dementia care
- Personal care
- 24/7 live-in care
- Light housekeeping and much more



Call us today on  
**01283 777 700**

[www.rightathomeuk.co.uk/eaststaffs](http://www.rightathomeuk.co.uk/eaststaffs)



**Award  
winning  
care now  
in Burton**



# WIN!

## A £50 Food & Drink voucher\* from...



### DOVECLIFF HALL

COUNTRY HOUSE HOTEL

For this month's competition, FOUR lucky readers can win a £50 FOOD & DRINK VOUCHER\* from **Dovecliff Hall**.

Dovecliff Hall is an elegant Grade II listed Georgian Manor House dating from 1790, situated in stunning grounds overlooking the River Dove.

The hotel which has been under new ownership since July 2017, is undergoing extensive improvements and redecoration.

Dovecliff Hall is the perfect location for any occasion from an intimate lunch or dinner for 2, a large family celebration, wedding, baby shower, business conference.....

They pride themselves on being able to provide a personal and bespoke experience.

Dovecliff Hall is open for breakfast, champagne breakfast, lunch, afternoon tea & dinner

as well as Sunday Lunch throughout the year.

They also have a full event programme throughout the year (see: [www.dovecliffhallhotel.co.uk](http://www.dovecliffhallhotel.co.uk)) including regular gourmet food and wine evenings.

#### Upcoming events :

- Mother's Day Lunch - 22nd March
- Easter Sunday Lunch - 12th April
- Murder Mystery Evening - 22nd May
- Abba Tribute Night - 29th May
- Ladies Day at Ascot - 18th June
- Father's Day Lunch - 21st June
- Summer Ball - 11th July
- Halloween Ball - 31st October
- Michael Buble & Friends tribute night - 5th December
- Christmas Party Nights in December
- Christmas Day Lunch
- Boxing Day Lunch
- New Year's Eve Ball

You can find more information at: **[www.dovecliffhallhotel.co.uk](http://www.dovecliffhallhotel.co.uk)**

To enter this month's competition, all you have to do is put your *name, address and daytime telephone contact number* on a postcard and send it to:

**Local Links Media  
Dovecliff Hall Competition  
PO Box 8049  
Burton-on-Trent  
DE14 9NQ**

Alternatively, you can e-mail your details to: **[local@locallinksmedia.co.uk](mailto:local@locallinksmedia.co.uk)**

The closing date for entries is the 14th of April and the winners will be announced in our May edition. Good luck to everyone who enters!

\* Vouchers not valid in conjunction with any offer. No change given. Not refundable. Booking essential.

Dovecliff Hall Hotel  
Dovecliff Road Stretton  
Burton upon Trent  
Staffordshire  
DE13 0DJ

T: +44 (0) 1283 531818  
W: [www.dovecliffhallhotel.co.uk](http://www.dovecliffhallhotel.co.uk)  
E: [enquiries@dovecliffhallhotel.co.uk](mailto:enquiries@dovecliffhallhotel.co.uk)



Tel: 01283 535421

Email: sales@homeandtrade.co.uk

ELECTRIC STREET

OFF WETMORE ROAD

BURTON ON TRENT

DE141RQ

## SUPER SPRING SAVERS 2020

www.homeandtrade.co.uk



DOVEDALE SLABS

450mm<sup>2</sup> Riven & Smooth  
£19.50 PER MTR  
£185.50 PER PACK 50 SLABS 10m<sup>2</sup>



FENCE PANELS

Lip Panels:  
4' X 6' : Was £21.00 Now £18.00  
6' X 6' : Was £23.50 Now £21.00  
Fully Framed Feather Edge  
4' X 6' : Was £30.00 Now £27.00  
6' X 6' : Was £32.00 Now



NEXUS

NEXUS PROJOINT FUSION FROM  
ONLY £29.99



DECORATIVE  
AGGREGATES

AVAILABLE IN 25KG BAGS &  
BULK BAGS  
ASK FOR MORE DETAILS



BLOCK PAVING

£13.51m<sup>2</sup> INC VAT  
50 BLOCKS PER m<sup>2</sup>  
Available IN A VARIETY OF COLOURS



OUTDOOR  
PORCELAIN

PRICES FROM £13.51 EACH INC VAT  
MATCHING INDOOR TILES AVAILABLE  
VARIETY OF COLOURS AND SIZES AVAILABLE



WEEDTEX

15m X 1m Roll £6.95  
25m X 2m Roll £18.50  
50m X 2m Roll £34.96



INDIAN  
SANDSTONE

£22.69m<sup>2</sup> PRICE BASED ON FULL CRATES OF 120.7m<sup>2</sup>  
4 ways : BEDFORD, KILNAGE, KILNAGE & BEDFORD  
VARIETY OF COLOURS AVAILABLE

ALL PRICES INCLUDE VAT

FREE LOCAL DELIVERY ON ORDERS OVER £50

## BOILER REPAIR MAN 07503 882189

Gas Boilers Installed  
Serviced & Repaired

Gas Fires Serviced  
& Repaired

Central Heating  
Systems Flushed

High Efficiency  
Radiators Fitted

Landlords Gas Safety Certificates



**Call Jon: 07503 882189**



Prestige Security Solutions

Roller Garage Doors – Industrial Shutters – Awnings  
Retractable/Fixed Grills – Glass Verandas

**We also supply sectional garage doors  
and composite front doors**

REMOTE CONTROLLED | INSULATED | FULLY INSTALLED

**ROLLER GARAGE DOORS**

**SINGLE £799.00 | DOUBLE £1150.00**

High Security | High Quality | Wide Range of Colours  
Fully Insulated | Quiet, Smooth Operation  
Remote Controlled | Emergency Override



**0116 278 5278**

www.prestigesecuritysolutions.co.uk

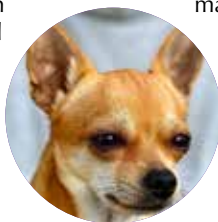


WE COVER  
ALL OF THE  
MIDLANDS

# Noise Phobias in Dogs *by Scarsdale Vets*

Fear of noises such as thunder and fireworks is a common problem in dogs and will start early on in life with noises encountered on a daily basis that make us jump. We know where the noise comes from, but our pets don't and noises such as fireworks are similar to things like cars backfiring, slamming doors and high pitch alarms – all of which attract our hearing, let alone our pets with their sensitive hearing.

What may be worse is that the pet may associate these noises with other things, which may cause them to become



fearful of too. Being attuned to body language, your pet may also pick up on your nervousness and if you reassure them and comfort them during these problems, they may believe there really is something to be fearful of and makes it even more likely that they will become more frightened by fireworks.

## Signs of Noise Phobias

Different animals may display different signs of noise phobias which include:

- Hiding (most common sign in cats)
- Chewing, urinating and defecating

- Panting and pacing, drooling, trembling or shaking and barking constantly
- Trying to escape (digging, jumping through windows or going through walls, running away)
- Seeking their owner
- Ignoring calls and not eating

## What Can Be Done to Help?

If you begin a desensitisation programme at the start of the year then your dog will be more prepared to deal with loud and sudden noises later down the line, particularly around bonfire night and New Year.

## DO YOU NEED A CLEANER?

Affordable, Reliable,  
Experienced, Professional

W: [www.diamondhomesupport.com](http://www.diamondhomesupport.com)  
E: [joe@diamondhomesupport.com](mailto:joe@diamondhomesupport.com)  
M: 07563246836

Fully Insured  
Choose from Weekly, Fortnightly or  
Monthly Cleans  
Same Cleaner Every Clean  
One off Deep Cleans  
Landlord Cleans

Diamond Home Support  
offer domestic cleaning,  
ironing and other  
domestic duties.



Does your dog...

- Bark at loud noises?
- Hide during fireworks?
- Have accidents at sudden loud noises?

Book a **FREE** nurse  
appointment to discuss their  
behaviour



**Stapenhill Practice**  
90 Spring Terrace Road  
Stapenhill, Burton-on-Trent  
DE15 9DX  
01283 568162

**Stretton Practice**  
36 The Green, Stretton  
Burton-on-Trent  
DE13 0EQ  
01283 565333



# What's On Guide

## MONDAY 16TH MARCH

### Stapenhill WI

We meet at Immanuel Church Hawthorn Crescent Stapenhill from 10am to 12pm on the 3rd Monday of every month. Join us for friendship and an interesting programme of events. New members and visitors are assured of a warm welcome. Contact Teresa Tel 07720 863097

## TUESDAY 17TH MARCH

### Burton Dance & Social Club

Every Tuesday evening 8-11pm at Marstons Sports and Social Club, Shobnall Road. Activities include sequence, ballroom and line dancing to professional live music, bingo, raffles and food nights. Come along and join us and meet new friends. For more information contact Pauline: 01283 519159

### Anslow Art Class

At Anslow Village Hall every Tuesday afternoon from 1-3pm. All levels welcome. Fees: £11 per class paid on the day or £9 per class for 6 weeks. For further details phone Helen on 07791 228 881 or email: helentarr2002@yahoo.co.uk

## WEDNESDAY 18TH MARCH

### Burton Amateur Radio Club

Burton Amateur Radio Club meets every Wednesday evening at 7-30pm. New members are very welcome and we meet at Stapenhill Institute 23 Main St, Burton-on-Trent DE15 9AP. Contact Bob 07812 146333 www.g3nfc.co.uk or club@burton-arc.co.uk

### T'ai Chi for Arthritis

Every Wednesday find renewed vitality, improved health and increased mobility, emotional calm and a greater sense of self confidence through T'ai Chi movements and related exercises. Classes at the Priory Centre Stretton 1.15pm to 2.30pm. £5 per class plus £25 annual membership.

## THURSDAY 19TH MARCH

### Burton Jazz Club

Every Thursday, at Marstons' Sports and Social Club, Shobnall Road, we present some of the best Jazz Bands in Britain, and occasionally Europe. We book as wide a variety of jazz as possible. Admission £9 on door from 7.30pm, for 8:30pm start, no membership, all welcome.

### Rangemore and Tatenhill WI

Third Thursday of the month at Henhurst and District Recreational Club. We enjoy a variety of activities including regular craft sessions, interesting speakers, trips and excursions. Visitors and new members are always welcome. Any enquires please contact Marian on 07752 160996

## FRIDAY 20TH MARCH

### Beginner's Latin in-line Class

Get fit & lose weight! Learn cha-cha, salsa, mambo, rumba, merengue, samba etc. Beginner's class 11.15-12.00 £4.00, Advanced class 10-11.00am £5.00. Every Friday at Priory Centre, Church Road, Stretton DE13 0HE. No partners required for any class. Ring 07598159744 or email larhiney@hotmail.com for more details

### Community Cafe

Every Friday from 10am to 12 noon at St Mary's Church Hall on Hillfield Lane, Stretton. Somewhere to meet friends old and new! Join us for lovely coffees and speciality teas, plus delicious homemade cakes. There's also a toddler area with lots of toys and games. Everyone welcome! For more details contact Claire on 07983 437500

## SUNDAY 22ND MARCH

### Mother's Day Lunch

Come along for Mother's Day Lunch at Dovecliff Hall. Call now to book: 01283 531818

## MONDAY 23RD MARCH

### Meno Class with Sam

Support, education and exercise to help you to take control of menopause. Every Monday at 7.30pm at Want2Dance with Victoria, Wharf Road, Burton on Trent DE14 1PZ. Classes are £8 and must be booked in advance as space is limited. For more information call Sam on 07866 746215 or email sam.lee@menohealth.co.uk

## TUESDAY 24TH MARCH

### Carers + Cafe

Carers + cafe meets in the Brewhouse every Tuesday from 10 o'clock to 12.30 pm organised by the Rotary club of Burton upon Trent for Carers and the cared for to meet with and make new friends, enjoy a cup of coffee or tea in a safe and friendly environment.

## WEDNESDAY 25TH MARCH

### Burton Folk Dance Club

Meet every Wednesday (except 2nd Wednesday each month) at Rough Hayes Community Centre, Henhurst Hill, DE13 9PX 7.30 to 9.30pm. New members welcome. Socialise and exercise. Contact 01283 812645.

### 'Best Foot Forward' Flower Arranging

Barton Under Needwood flower club would like to invite you to a demonstration by Linda Smith entitled "Best Foot Forward" on Wednesday 25th March at St James Church Hall 7.30pm there will be refreshments and a raffle of the arrangements non members £6.00 everyone welcome.

## THURSDAY 26TH MARCH

### Mini Movers

Mini Movers Dance is a growing class for tots. This dancing and singing class is specially created to develop balance coordination, confidence, speech and imagination. The first class is free - £4 per class, paying for each half term in advance. Every Thursday, 9.30am to 10.15am at Want2Dance with Victoria, Europa House, Wharf Road, Burton upon Trent, DE13 1PZ. Contact Victoria on: 07791 204903

## FRIDAY 27TH MARCH

### Tots, Pots & Tales

Fridays at The Mug Tug, Barton Marina. Listen to a story and paint a pot related to the tale. Juice and biscuit for the Tots, Grown-ups welcome to bring their own hot drinks. 1.30pm to 2.30pm - See our website for more details. Call 01283 711341 to book.

## SATURDAY 28TH MARCH

### Barton Bowls & Social Club

Now open every evening! Darts, pool, dominoes, crib and crown green bowls during bowling season. Members, members guests and new members always welcome

## SUNDAY 29TH MARCH

### East Staffordshire Ramblers

Walkers of all abilities are welcome to join us on Wednesdays, Fridays & weekends for walks in Staffs, Derbs & Leics. Visit [www.eaststaffsramblers.org.uk](http://www.eaststaffsramblers.org.uk) or contact 01283 713209.

## MONDAY 30TH MARCH

### Dance Exercise Class

Fun and easy to follow low impact dance based exercise class suitable for all ages and abilities. Every Monday from 10.30-11am at the Priory Centre, Stretton. Contact. 07851 239165

## TUESDAY 31ST MARCH

### Painting For Pleasure

Every Tuesday from 1pm to 3.30pm. Painting for Pleasure is a meeting place for artists to practise their skills in a friendly group. The cost is £12 per month, for the room hire. Contact Dave Jones for more information on: 07429 074758

## WEDNESDAY 1ST APRIL

### Burton Abbey WI

Meeting at the Brewhouse on the first Wednesday of the month at 10am to 12 noon. Good Speakers, refreshments, also days out organised. New members welcome. For more information contact Pauline Gaskin 01283 565620

### Barton-Under-Needwood WI

1st Wednesday of every month at The Village Hall, Crowberry Lane. Meeting 7.30-9.30 with good speakers, refreshments and fun. Organised events and trips throughout the year. New members and visitors always welcome.

# Find more events on our website

## THURSDAY 2ND APRIL

### New Beginnings

Mature Singles Friendship Group (55yrs+). If you enjoy socialising but don't want to do it on your own, then come and join us to make new friends. Meeting each Thursday 8pm at Fradley Arms (on A38) - feel free to just come along or contact Sue: 07742 801681

### Burton Friendship Club

For the over 60's, we meet at 10.30am on the first Thursday of every month at The Institute Tutbury. Come and join us and make new friends. We have speakers, social time, days out, holidays and much much more. Contact Stuart and Penny on 01283-716626 for more details.

## FRIDAY 3RD APRIL

### Burton Flower Club

We meet at The Priory Centre, Church Road, Stretton DE13 0HE on the first Friday of the month at 7.30pm Visitors are always welcome. Contact 01283 704180/ 01283 348754, visit [www.flowersnorthmidlands.co.uk](http://www.flowersnorthmidlands.co.uk)

## SUNDAY 5TH APRIL

### Barton Bowls & Social Club

Now open every evening! Darts, pool, dominoes, crib and crown green bowls during bowling season. Members, members guests and new members always welcome

## MONDAY 6TH APRIL

### Burton Prostate Cancer Support Group

Men suffering, being treated, or recently diagnosed with Prostate Cancer, plus spouses, are invited to join with a dynamic Support Group meeting at Burton Library, Riverside, DE14 1AH. First Monday in the month except Bank Holidays. Always call to check meetings: 07478 889577, or email on: [burton.prostate.cancer.suppgrp@gmail.com](mailto:burton.prostate.cancer.suppgrp@gmail.com)

## TUESDAY 7TH APRIL

### Shakespeare Group

Interested in Shakespeare? Limited spaces available. The group read and watch Shakespeares works Tuesdays 10 to 12 noon Call 01543 251556

## WEDNESDAY 8TH APRIL

### Stretton & Claymills Women's Institute

Meeting in the back room of the Priory Centre, Church Road, Stretton at 7.15pm on the second Wednesday of every month and new members are very welcome. For info email: [strettonandclaymillswi@gmail.com](mailto:strettonandclaymillswi@gmail.com)

### Priory Art Group

Every Wednesday morning 9.30 to 12. We are a small friendly group of artists meeting at the Priory Centre, Church Road, Stretton. New members welcome! Contact: Sandra Tel: 01283 329743

## THURSDAY 9TH APRIL

### Burton Belles Women's Institute

From 7.15pm-9.30pm. We meet at the St Chads Centre DE14 2SS on the 2nd Thursday of the month. First timers can visit for free. £4 a month or £41 a year. Come along, make new friends, try something new and have fun. Contact: Wendy Plant Tel: 07772 548230

### Stars

Stars is a weekly club for senior citizens held at Yoxall Parish Hall. Every Thursday 2-4pm. Variety of activities including quizzes, arts, crafts, special events and lots more. £3.50, includes tea or coffee, cakes, biscuits and raffle ticket into the weekly prize draw. For more details call Claire 01543 472145

## FRIDAY 10TH APRIL

### FitSteps with Rose

Fridays 18.00 at Want2Dance with Victoria, Wharf Road, Burton £5 per class. FitSteps is a fun class, based on ballroom and Latin dance steps, with no need for a partner. Beginners always welcome Contact: Rose 07562 331041 to book

## SATURDAY 11TH APRIL

### Rolleston WI Literary Lunch

At Scouts HQ a delicious lunch will be served at 12.30pm. Following this Rebecca Tope Crime novelist will talk about her work. Tickets £10 to include lunch on sale from Verity Conner 01283 813414 from January. Proceeds to WI funds.

## SUNDAY 12TH APRIL

### Gresley & Wychnor Model Railway

At Gresley Social Centre 5a Park Road Church Gresley, Swadlincote, DE12 9QE Sunday & Monday 10am-4pm. 8 plus layouts ranging from N-gauge up to Garden size, light refreshments and local unmade-up parking. Adults £3.50; Children £1.00 Families £7.50, Under 5s free. Contact: 07946 522712

### Claymills Victorian Pumping Station

Come and see four giant beam engines and more than 20 other stationary steam engines in action. Children's activities, other attractions, great café! 10am - 5pm. Contact: 01283 509929

## MONDAY 13TH APRIL

### Briz Valley WI

Meeting at Violet Way Academy, Violet Way, Stapenhill on the 2nd Monday of the month, 7.30-9.30pm. We like to keep our meetings informal and friendly with an interesting programme of events. New members and visitors are always welcome, so why not come along and see what you think. For further details please contact Pat 07580 568883

## TUESDAY 14TH APRIL

### Walton-on-Trent WI

Every 2nd Tuesday of the month at 7.15pm at Walton Village Hall. Come and join us for fun, friendship, learning and sharing. For more information contact: Joan on 01283 713380

### Branston Womens' Institute

Held the 2nd Tuesday of each month. We are a friendly group and try to mix our meetings with interesting talks, craft, trips and social events. Contact Mrs Barbara Reeves, President, Tel. 01283 546536

## SATURDAY 18TH APRIL

### Handel's Messiah

The Needwood Singers perform Handel's Messiah at St. John the Baptist Church, Shenstone, WS14 0JB at 7pm. Featuring The Queens Park Orchestra. Tickets £15 pre-booked (£20 on the door). [www.theneedwoodsingers.co.uk](http://www.theneedwoodsingers.co.uk)

## COMPETITION WINNERS

Congratulations to our **Golding Skip Hire** competition winner, who has won a skip:

**Mrs. M. Wilson, Branston**

Look out elsewhere in **LOCAL LINKS** this month to win a £50 voucher from Dovecliff Hall.

## LAST MONTH'S SUDOKU PUZZLE SOLUTION

2	3	4	5	8	7	6	9	1
7	5	6	2	1	9	8	4	3
9	8	1	3	4	6	7	2	5
1	7	8	9	5	2	3	6	4
5	4	9	6	3	8	1	7	2
6	2	3	1	7	4	5	8	9
3	9	7	8	2	1	4	5	6
4	6	5	7	9	3	2	1	8
8	1	2	4	6	5	9	3	7



## Easter Steaming 12th & 13th April 10am - 5pm

Come and see our giant beam engines in steam and more than 20 smaller stationary engines running.

Children's activities.

Hot and cold refreshments in our Stoker's Rest Café.

Admission prices on Steaming Days:

Adults £6.50 - Concessions £5.50 - Children £3 - Family £16

Admission on all other days is free. Donations welcome.

[www.claymills.org.uk](http://www.claymills.org.uk)

01283 509929

Meadow Lane, Stretton,  
Burton-on-Trent, DE13 0DA



**Claymills**  
Victorian Pumping Station

## Could you make a difference every day?

Right at Home offers rewarding opportunities in quality care at home.

- Amazing job satisfaction from improving the lives of others
- Local work and hours that suit your lifestyle
- Full training, shadowing and career development
- CareGivers are carefully matched to regular clients



To enquire about joining Right at Home contact us today:

[www.rightathomeuk.com/eaststaffs](http://www.rightathomeuk.com/eaststaffs)



**01283 777 700**

## Steve Frost

**Windows. Doors. Conservatories. Fascia.**

### UPGRADE YOUR OLD CONSERVATORY ROOF FOR A NEW ALL YEAR ROOF

Replacing your old conservatory roof to a new warm roof stops you feeling cold in winter and too hot in summer.

- Upgrade your double-glazed units to planitherm energy saving glass, with argon gas infill and warm edge spacer bar to save more heat.
- All windows, doors and conservatories are made to suit your individual taste and design.
- We are always happy to arrange viewings of past installations to see our full quality and range available.



For your free no obligation quotation contact us on:

**01283 701 458**

email: [steve@villagec.co.uk](mailto:steve@villagec.co.uk)

65 Findern Lane, Willington, Derby, Derbyshire, DE65 6DW





# Share the Local Love

**A**s a local magazine we love to champion our local businesses, but have you ever thought about the benefits of using local businesses?

## Benefits the Local Economy:

Local businesses are the backbone of our economy, the epitome of the high street. But what you may not know is that shopping at a local business, rather than a large chain, is actually better for the economy of your community. Research shows that £10 spent with a local independent shop means up to an additional £50 goes back into the local economy. This is simply because the nearby shop owners, who you are spending your money with, will then put that money back into your local community by going into local pubs and restaurants etc, thus circulating the money and allowing your community to thrive.

## Creates Local Jobs:

Shopping with and investing

in local businesses means you can have a very strong and positive effect on the health of the local jobs in your area. Small, local businesses are surprisingly the largest employer of jobs nationally and provide the most local jobs to communities. Helping to grow the number of jobs in your area makes for a better place to live and work which then creates a healthy economy for the community.

## Better Customer Service :

You can't beat the personal touch of a local owner who knows everyone in the area. They can offer you a product that is suitable for you, your house and even your area. Building relationships between the local owner and the local customer goes further than just a purchase. It is also worth remembering that local shops stock an inventory based on their own customer's choices rather than national fashion trends. This is so you can find what you want rather than finding what they want to sell you.

## Local Incentives:

Local governments often provide tax incentives to entice nationally-owned companies to their communities. However, if these corporations are paying less in taxes it means that local residents are paying more. But, when you buy from local companies it lessens individual tax burdens and creates up to 75 per cent more tax revenues for your community.

## Better Aftercare:

It's important to know that if anything was to go wrong you have a local company to go to, someone to talk face to face with. Large commercial companies will often provide you with a phone number for their customer service team and make you wait for what seems like an eternity until you get to speak to someone. This simply is not the case with a local business. They will often prefer to meet up face to face, rather than on the phone, and find out exactly how they can help fix the problem.



## LOCAL LINKS SUDOKU

	7		8		2			5
5					1			
6	4			9			2	
							4	
		1		8		6		
	5							
	3			1			8	7
			9					3
9			6		8		1	

Sudoku is a logic puzzle where you follow one simple rule:

Simply fill in the boxes so that the nine rows, the nine columns, and the nine 3x3 squares all contain every digit from 1-9.

LLS-48-29

## Trust the domestic cleaning experts at MOLLY MAID

That's what tens of thousands of people around the world do!

- Uniformed and professionally trained staff
- 100% guaranteed and fully insured
- Regular or occasional cleans
- Free in-home estimate
- All materials supplied
- No contracts



01283 351770

[gill-dawson@mollymaid.co.uk](mailto:gill-dawson@mollymaid.co.uk)

[www.mollymaid.co.uk/burton-upon-trent](http://www.mollymaid.co.uk/burton-upon-trent)



# GOLDING

SKIP HIRE

[www.golding-skips.co.uk](http://www.golding-skips.co.uk)

**BOOK ONLINE OR CALL:**  
**01283 544389**

- All skip sizes
- All areas
- Same day delivery
- Grab Hire
- Fully Licensed
- Road Permits Arranged

**FAMILY RUN BUSINESS**  
**FRIENDLY STAFF**  
**QUICK RESPONSE**



**Nicolson Way**  
**Off Wellington Road**  
**Burton on Trent**  
**Staffs DE14 2AW**

Call us on 01283 547726 or visit us in store at: Burton Indoor Market, Burton-On-Trent, DE14 1HA



# THE MOBILITY CENTRE

Specialists in personal mobility & scooters  
**IN BURTON**



**RISER CHAIRS  
FROM £595**



**Aids for Daily Living**



**Rise & Recline Chairs**



**Mobility Aids**



**Scooters**



**Bath Lifts**



**Walking Aids**



**Wheelchairs**

**Call us on  
01283 547726**

**Open Monday to Saturday  
9.30am - 3.30pm**

**YOUR LOCAL MOTABILITY SPECIALIST**



**Professional  
Driveways &  
Landscaping**



**BLOCK PAVING • TARMACADAM • GRAVELLING  
PATIO SLABS • FENCING • TURFING • LANDSCAPING  
PRESSURE CLEANING • BRICK WORK • DRAINAGE**

**[www.professional-driveways-and-landscaping.co.uk](http://www.professional-driveways-and-landscaping.co.uk)**

Email: [professionaldrivewayssales@gmail.com](mailto:professionaldrivewayssales@gmail.com)

**Telephone: 01283 329 662**

**Direct: 07534 465706**

**Anglesey House, Anglesey Road, Burton-On-Trent DE14 3NT**

**FREE ESTIMATES • ALL WORK GUARANTEED • NO DEPOSITS • 14 DAY COOLING OFF PERIOD**



# Be a Super Cat Saver!

by Derby Cats Protection



**H**OW CAN ONE PERSON SAVE 100 CATS? Easy! Just spay or neuter one! Cats Protection is offering to neuter/spay your cat for just £10 per animal.

If you are on means tested benefits, low income, are a full-time student living away from home or on pension credit please call our Catline on 01332 206956 or email [enquiries@derbybranch.cats.org.uk](mailto:enquiries@derbybranch.cats.org.uk) and ask about our cost-assisted neuter voucher scheme. Visit our website which explains things in more detail and lists participating vets for you to arrange it directly with the vet:

[www.cats.org.uk/what-we-do/neutering/neutering-campaigns/east-midlands-neutering-campaign](http://www.cats.org.uk/what-we-do/neutering/neutering-campaigns/east-midlands-neutering-campaign)

Looking to advertise?

Your advert could appear in  
*Local Links*  
for as little as

**£51**

Call us now on 01283 564808 to advertise

## EASY GLIDE GARAGE DOORS



**The EASY GLIDE Garage Door is an exceptional garage door system - THE BEST IN THE UK.**

Open and close the door at the push of a button from within the comfort of your car. Our automatic garage doors enhance the look of your property and have great thermal values keeping your property warmer.

Unit 11, Falcon Business Centre, Hawkins Lane, Burton on Trent DE14 1SG

**01283 480 505**

[www.easyglidegaragedoors.co.uk](http://www.easyglidegaragedoors.co.uk)

We take out your old door, remove from site and replace with a new insulated electric roller door complete with 2 remote controls...

**FOR  
ONLY  
£699**

Based on a white door 7ft x 7ft

# DO YOU HAVE A WILL?

Whether you are preparing for the future or are in the process of administering a loved one's estate, Smith Partnership's team of expert solicitors offers a range of legal services covering all aspects of Wills and probate.

SMITH  
PARTNERSHIP  
SOLICITORS



Our experts



Luke Smyth



Kate George



Jack Robinson



Ewelina Zygadlo

The  
**LEGAL  
500**  
UNITED KINGDOM

LEADING FIRM

2020

0330 123 1229 [www.smithpartnership.co.uk](http://www.smithpartnership.co.uk)

smithpartnership smithpship

Derby • Leicester • Burton • Stoke • Swadlincote



# FIND OUT WHAT YOUR HOME IS WORTH

## Use My FREE Instant Online Valuation Tool



If you're thinking of selling your home my Hometrack valuation report is a great starting point to find out what your home might be worth or what you could rent it out for.

It's free and available on my website - they're used by 16 of the top 20 UK lenders!

**This report normally costs £19.95 and includes ALL recent house sales near you.**

Get your FREE online valuation report at:  
**[EweMove.com/BartonUnderNeedwood](http://EweMove.com/BartonUnderNeedwood)**  
Or Call 24/7: **01283 247 076**

EweMove respects any existing sole agency agreement already in place with another agent.