

# LOCAL LINKS

[www.locallinksmedia.co.uk](http://www.locallinksmedia.co.uk)

[www.facebook.com/locallinksmagazine](http://www.facebook.com/locallinksmagazine)

ISSUE 162  
FREE

**JUBILEE BUNTING**  
Celebrate in style!

**CELEBRATE!**  
Jubilee events around Burton

**WIN** VARIOUS TICKETS from  
**The National Brewery Centre**

Check out our  
**What's On Guide**  
full of local and community events

Your independent, free local magazine

Delivered free to Branston, Brizlincote Valley, Stretton, Rolleston on Dove & Walton on Trent

# Prostate cancer is the most common cancer in men in the UK



Think you might have symptoms of prostate cancer? It can be daunting but above all, it's important to get things checked out.

Our simple prostate screening service is comprehensive and led by a specialist nurse and you'll get your results within 48 hours, giving you peace of mind or treatment if you need it, as quickly as possible.

#### What to look for:

- Urinating more frequently
- Difficulty when you try to urinate
- Blood in your urine.

To book your prostate screening today, call **0300 790 6190**



# LOCAL LINKS



## ISSUE 162

Dear Readers,

*Oh how we love the warmer weather! Light jackets, beer gardens and yes, the occasional shower, but we can forgive the weather that when it's not biting cold...after all the flowers need it!*

*Speaking of flowers, that very British flower show is happening in May, Chelsea of course! We have a wonderful article on how helpful flowers can be in your veg patch to keep pests at bay.*

*We also are looking forward to the Queen's Platinum Jubilee celebrations. There's lots going on around Burton so be sure to check out our article on whats on and plan your weekend. Don't forget to get ready and make some bunting too! We have the cutest little Union Jack bunting for you to make.*

*Dads, we've not forgotten you! With Father's Day on the horizon we've compiled some terrible Dad jokes for you to torment the kids with!*

The **LOCAL LINKS** team



**T. J. Parry & Family**  
Funeral Directors  
*A service of distinction*  
01283 205285

### FOR GENERAL ENQUIRIES CONTACT:

Heather or Rhian at  
local@locallinksmedia.co.uk

### FOR ARTWORK ENQUIRIES CONTACT:

Liona at  
graphics@locallinksmedia.co.uk

**01283 564608**

Local Links Media  
PO Box 8049  
Burton-on-Trent  
DE14 9NQ

[www.locallinksmedia.co.uk](http://www.locallinksmedia.co.uk)



[facebook.com/locallinksmagazine](https://facebook.com/locallinksmagazine)

## CONTRIBUTORS

Including:

Angela Sargent, Tim Brooks,  
The National Brewery Centre,  
The Ridware Gallery,  
Cash4Clothes4You

We have gone green, World Land Trust's Carbon Balanced project sites offset emissions through the protection of tropical forest under imminent threat of deforestation and degradation.



### Next issue deadline:

Tues 7<sup>th</sup> June

### Next issue out from:

Weds 15<sup>th</sup> June

This magazine delivered free to:

Branston,  
Brizlincote Valley,  
Rolleston,

Stretton &  
Walton on Trent

We also deliver a magazine free to:

Alrewas,  
Barton,  
Fradley,

Rangemore,  
Tatenhill &  
Yoxall

This magazine has been produced using Carbon Balanced paper in conjunction with the World Land Trust.

**DISCLAIMER** - The accuracy or content of any advertisement is not warranted by Local Links Media, nor do Local Links Media endorse or guarantee any of the products or services advertised, except any advertisement expressly relating to our services. We are not to be held responsible for any inaccuracies in the adverts nor to any consequences arising from inaccuracies. We are not to be held responsible for error in printing, damage or loss. It is the advertisers responsibility to ensure conformity with the Trades Descriptions Act 1975; Business Advertisements Disclosure 1977; Sex Discrimination Act 1975, and consumer Credit Act 1974. All artwork created by Local Links Media remains the property of Local Links Media and therefore must not be used in any other media without permission, as this is a breach of copyright laws.





# BROKEN LOCKS?

**Call the Experts!**

Fast, Local,  
Professional Locksmith  
Established for 19 years



- UPVC door & window locks
- Car Locks & Keys
- Wooden, Mortice, Composite door locks
- Garage door locks
- Aluminium door locks
- Burglary repairs
- New House Moves

**All Work Fully Guaranteed**

Call Anthony  
**01283 686123**  
[access-locksmith.co.uk](http://access-locksmith.co.uk)

**Access** LOCKSMITHING

**TRUSTED TRADER** Approved



## Next Steaming 28th & 29th May 10am - 5pm

Come and see our giant beam engines in steam and more than 20 smaller stationary engines running. Children's activities. Hot and cold refreshments in our Stoker's Rest Café.

Adults £7.50 - Concessions £6 - Children £3 - Family £18  
Open for static viewing Thursdays and Saturdays, admission free, Donations welcome.

[www.claymills.org.uk](http://www.claymills.org.uk)  
**01283 509929**  
Meadow Lane, Stretton,  
Burton-on-Trent, DE13 0DA



## Claymills

Victorian Pumping Station

# Bcosy Heating



**Hydrogen Blend Ready**

**WORCESTER** **BOSCH**

*We also do  
plumbing  
repairs and  
replacement  
controls*

**safe** REGISTER

**Make sure your new boiler is ready for the future**

- **Heating Systems**
- **New Boiler Installation**
- **Boiler Servicing**
- **Heating Maintenance**

**Plus Much More.....No Job Too Large or Small**

W: [WWW.BCOSYHEATING.CO.UK](http://WWW.BCOSYHEATING.CO.UK)  
E: [SERVICE@BCOSYHEATING.CO.UK](mailto:SERVICE@BCOSYHEATING.CO.UK)

# 01283 713592

# Moving house?

A good solicitor makes the transition to your new home easy.

We are Conveyancing Quality accredited by The Law Society, because we consistently make moves like yours stress free.

That's why 99% of customers recommend us to family and friends.



BUSINESS & COMMERCIAL • CONVEYANCING • FAMILY • LITIGATION • WILLS, INHERITANCE TAX & PROBATE • EMPLOYMENT

**01283 531366**  
[www.astlepaterson.co.uk](http://www.astlepaterson.co.uk)

Clay House, 5 Hominglow Street  
Burton upon Trent  
Staffordshire, DE14 1NG

**Saima Razaq**  
Solicitor, Head of  
Residential Conveyancing

**JOJO'S NAILS**

JOJO'S NAILROOM SPECIALISES IN THE NATURAL NAIL. BASED IN STRETTON WE OFFER LATE NIGHT APPOINTMENTS UNTIL 9PM, EXCEPT MONDAY UNTIL 6PM.

- Loyalty rewards & refer a friend discounts
- Nail parties & packages
- Luxury Manicures & pedicures
- Relaxed one to one salon environment
- Nail art specialist
- Gift vouchers available

**07734 925 957**

@jojoes.nailroom Jojos Nailroom

Checkatrade.com

**We Offer a Full Range of Roofing & Property Maintenance Services**

- Re-Roofs
- Roof Repairs
- Chimney Stacks
- Slating
- Tiling
- New Felt & Battens
- UPVC Soffits & Fascias
- Guttering
- Repointing
- Flat Roofs
- Brickwork
- Damp Proofing
- Exterior Painting

**Call For Free Estimates & Advice:**  
**Office: 01283 809701**  
**Mobile: 07429 998635**  
[cppropertymaintenance20@gmail.com](mailto:cppropertymaintenance20@gmail.com)

**M C B Electrical**  
OVER 25 YEARS EXPERIENCE



- Rewires, New Builds, Extensions
- Consumer Unit Upgrades
- Showers, Cookers, Heating
- Sockets & Telephone Points
- Internal / External Lighting
- Testing & Inspecting & EICR Reports
- Fully Insured & Compliant to IEE Regs

**P** 

Free, Friendly, No Obligation Quote  
**Tel: 01283 532074**  
Mob: 07890 003 979  
Email: [m.c.b.electrical@btinternet.com](mailto:m.c.b.electrical@btinternet.com)  
Web: [www.electriciansinburtonupontrent.co.uk](http://www.electriciansinburtonupontrent.co.uk)  
5 Niddus Close, Branston, Burton on Trent, Staffordshire DE14 3HP

 **Meadowview**  
GARDEN SERVICES

- ✓ Tree services
- ✓ Hedge maintenance
- ✓ Grass mowing
- ✓ Garden clearance
- ✓ Ground maintenance
- ✓ Full waste carriers licence
- ✓ Planting
- ✓ Woodchip
- ✓ Logs for sale
- ✓ Fully insured

M: 07835 218 041 T: 01283 763572  
f E: [gt.meadowview@gmail.com](mailto:gt.meadowview@gmail.com)  
W: [www.meadowviewgardenservices.co.uk](http://www.meadowviewgardenservices.co.uk)

**TIME TO RECLAIM YOUR LOFT SPACE**



We are specialists in loft ladders and hatches for easy and safe access to your loft. We also provide boarding, lighting and insulation solutions. This 'Spring Clean' time we can help you turn your lost space into really useful loft space.



**WHAT MAKES US DIFFERENT**

- No waiting around. We arrive on time, every time
- Lifetime Guarantee
- Reliable, local company working in your home
- Extra confidence because we are accredited by Which? Trusted Traders
- Absolutely no mess and no fuss

Call Sam to book a FREE survey & quotation [WWW.ACCESS4LOFTS.CO.UK](http://WWW.ACCESS4LOFTS.CO.UK)

**01785 595146**



# Jubilee Bunting

With the Queen's Platinum Jubilee on 2nd June fast approaching, we hope you're getting prepared! Here's a cute bunting to make to give your home some patriotic flair for the long weekend!

## Union Jack Heart Garland

### You will need:

Royal blue yarn or wool  
Red yarn or wool  
White yarn or wool  
Cardboard  
A needle for wool  
Scissors

### Step 1:

Cut out several cardboard hearts from a sturdy piece of cardboard. We would suggest 7-10cm in size. Use the scissors to cut out tiny snips around the edge of the heart. This will help the yarn wrapping process.



### Step 2:

Take your blue wool and tie it around the heart, using the small slits in the edge to catch the wool. Wind until you have enough wound round to build

up a layer dense enough that you can keep winding without needing the slits. Wind the thread around the heart until it is completely covered.



### Step 3:

When completely covered Tie of the end of the blue wool and tuck the tail in under the wool wraps.

### Step 4:

Using the white wool, wind an 'X' Shape around the heart.



Then with the red wool, wind another 'X' shape over the top of the white one but make it narrower so that you can still see the white 'X' below.



### Step 5:

Repeat step 4, but instead of winding an 'X' shape, wind a '+' shape over the top of the 'X' that you've already made.



### Step 6:

Now that you have made one heart, you can repeat all the steps until you have several hearts.

### Step 7:

Cut a long length of wool and thread it through the wool needle. Then feed the needle through the yarn in the dip at the top of the heart. You add more stability by looping the needle through again as this will stop the hearts sliding along the wool.

Repeat this process for each of the hearts, with the desired space in between each one. Hang by tacking or tying the ends.

Now you're ready for a cheeky slice of victoria sponge and a glass of Pimms to toast m'am.



# TRUSTED CARE IN YOUR OWN HOME

Keeping you and your loved ones safe during this challenging time

Our services include:

- Companionship • Meal Preparation • Personal Care • Light Housekeeping • Dementia care
- Respite Care • Shopping • Medication Reminders • Running Errands • 24-Hour Live-in Care

We follow Public Health England guidelines around the use of Personal Protective Equipment\* and all of our CareGivers are trained in COVID-19 infection prevention and control.

\* Photography taken before COVID-19 outbreak



Contact us today for more information:

01283 77 77 00

[www.rightathomeuk.co.uk/eaststaffs](http://www.rightathomeuk.co.uk/eaststaffs)

**Right  
at  
Home**  
Quality Care in Your Home

**BLAKENHALL PARK**  
High Quality modern Offices, Storage and Containers in beautiful rural settings

**Fed up with the city?  
GO GREEN!**

- Enjoy Barn Converted offices with original features
- Benefit from ample parking for your staff and visitors
- Secure site with CCTV • Comfort heating/air conditioning
- Flexible container/storage options

[www.blakenhallpark.co.uk](http://www.blakenhallpark.co.uk)

Blakenhall Park, Burton under Newwood, Burton on Trent, DE13 8JG  
Tel: 01283 713 901 Email: [info@blakenhallpark.co.uk](mailto:info@blakenhallpark.co.uk)

Image Credits: Linwood Fabrics

**NEEDWOOD**  
Living

Home accessories & furniture, ladies clothes & jewellery, giftware, made-to-order curtains & cushions, full interior design service.

136 Main Street  
Alrewas, DE13 7ED  
01283 711 272

7A High Street,  
Tutbury, DE13 9LP  
01283 813 322

[needwoodliving.co.uk](http://needwoodliving.co.uk)  
[info@needwoodliving.co.uk](mailto:info@needwoodliving.co.uk)



# Jubilee Events Around Burton

We're super excited to celebrate the Queen's Platinum Jubilee on the upcoming long weekend! We're spoilt for choice for places to go! See if you can choose... we promise it's a difficult choice!

## Jubilee Beer Festival

From 2nd June at 12:00 pm to 5th June 10:30 pm. Marston's Social Club are hosting a 4 Day Beer Festival to mark the long Jubilee weekend. There will be a live band "Queen Day" on the Friday and on Sunday afternoon there is a 'Family Fun Day' with bouncy castle, giant games, music, karaoke and BBQ. Pop along to Marstons Sports & Social Club, Shobnall Road!



## The Big Burton Jubilee

On Friday June 3rd & Saturday June 4th celebrate the 70 year reign of her Royal Highness Queen Elizabeth II and the launch of The Big Burton Carousel Sculpture Trail. Supported by East Staffordshire Borough Council, this event will be situated on the Regatta Field and Stapenhill Gardens and offers an exciting programme of workshops,

stalls and performances across the 2 days for the whole family to enjoy, including: children's crafts, balloon modelling, child friendly theatre, a fairground carousel, games, food stalls, a double decker bus bar, local bands, theatre performances, shire horse and cart rides and a Friday night comedy gig!

During the event there will also be a kiosk to collect maps and learn more about The Big Burton Carousel sculpture trail, a 12 week trail that features 30 different carousel horses in Burton and includes 12 different themed weeks and activities.

Visit from 10am – 4pm at Stapenhill Gardens and Regatta Fields, DE15 9AP



## Tutbury Jubilee Beacon

Starting on Thursday 2nd June at 4pm festivities will begin at Tutbury Castle. Over the long weekend events include:

2nd June – Tutbury Castle hosting the Jubilee Beacon.

3rd June – Village Jubilee Photograph & Walk to Fauld Crater.

4th June – Street Party on the High Street with Music,

Choirs, Entertainment, Food & Stalls.

5th June – The Big Lunch, picnic with Brass Bands, Choirs and other Entertainers

## Afternoon Tea for the Queen's Platinum Jubilee

The Mulberry Restaurant at Burton & South Derbyshire College are hosting an afternoon tea on Thursday 26th May with lunch service from 12 noon. The afternoon tea includes a wide variety of sandwiches, savoury bites, a delicate selection of freshly made cakes and sweet treats and copious amounts of tea or freshly filtered coffee for £14.95pp. To book a table, please call 01283 494673 or email [mulberrybookings@bsdc.ac.uk](mailto:mulberrybookings@bsdc.ac.uk)



## Jubilee Weekend Street Market

On Saturday 4th June from 1pm to 5pm, Alrewas Royal British Legion, are hosting a Jubilee weekend Village Street Market Village with local business stalls and food stalls. There will be food, tombola, raffle (with funds going to the Alzheimers Society) and the village Jubilee Choir will be performing.

# Albion

Bathrooms | Kitchens | Electricals

## The Bathroom & Kitchen Professionals

Burtons Premier  
Bathroom & Kitchen  
Showroom (est. 2006)

- Free Home Consultations
- Free Local Delivery
- Over 30 years experience
- Quality Installers
- Guaranteed products

Call us now on 01283526555  
Email us: [sales@albionbke.co.uk](mailto:sales@albionbke.co.uk)

Visit our website  
[www.albionbke.co.uk](http://www.albionbke.co.uk)

Unit 19 Battista Road  
Albion Gateway  
Stretton  
Burton on Trent  
DE13 0FW

### Simon Richardson Legal Services Limited



Former partner and head of private client services at Smith Partnership with over 30 years experience in all areas of the law, latterly specialising in:

- Advice on protecting against care fees and inheritance tax
- Lasting Powers of Attorney
- Administration of deceased estates including contested estates
- Property matters including disputes
- Appointments available 7 days a week, within and outside office hours

Telephone: 07495 491328  
or email: [richsdr@aol.com](mailto:richsdr@aol.com)



Make any Occasion special at Home  
**Click & Collect**  
**Birthday's in a Box**  
See our Website for details



Barton Marina, Barton under Needwood, DE13 8AS  
Tel: 01283 770441 [www.themagytug.co.uk](http://www.themagytug.co.uk)



# By The Barn

by Angela Sargent

**A**s we move into summer and the weather has warmed up, we are reaching optimum grass growth and nutrition. Farmers will be out fertilising the pasture fields, having shut them off from being grazed for 6 weeks. Then the grass will be cut and clamped or baled for keeping until winter. Maybe the field will have more than one cut taken, but much depends on the availability and price of fertiliser and whether, or not, it has been bought in advance. Slurry can be used but can't be grazed immediately.

We must decide if we are making silage to sell, or if we will graze all our grass this year, as we won't need any for next winter. If we are, then the fields need to be shut off. Crop fields will be sprayed to prevent disease, but the majority of what you see is water- around 97%. Weather conditions have to be right otherwise a high-cost treatment is wasted. All in all, there will be large and relatively slow moving machinery on our narrow lanes.

Our spring fieldwork is done and now our time is spent looking after our growing lambs. These will need worming and vaccinating. Ted has to round every one up (and they tend to sleep in nooks and crannies, under hedges etc.) and, keeping a safe distance, move the whole flock down the field and into the yard, moving them into a holding pen (which is, hopefully, big enough). It's very noisy as lambs get separated accidentally from their mums and both shout to find each other. But it's for their own good, as young lambs are prone to any parasite they pick up, unlike their mum who may have some resistance. Any lame sheep will also be treated- sometimes it might just be hard clay stuck between the cleats or it might need more medical treatment.

We have a bunch of ewes that are no longer fit for producing lambs, for various reasons and these will be separated out at an appropriate time, if they are not rearing lambs currently and helped to get fit before going to market.

The hedges will be filling up with blossom as the hawthorn follows the Blackthorn into flower, along with many species of tree, such as the Horse Chestnut and the scent will be glorious on a warm May afternoon. Our fields will see the Milkmaids blossom and many insects will be out and about, including the Orange-tip and Brimstone butterflies.

Rabbits will be seen grazing along the edges of fields, particularly in the early morning and late evening, when they are less likely to be disturbed and maybe rustling along the undergrowth, where the ground nesting birds will already have made their nests. The highest point of the farm (80m) is to be found near a pond and from there we can look across to the surrounding area and the Derbyshire peaks. Sitting there in the sun with the birds singing is a little piece of tranquillity.







## Some **great news** for denture wearers

Thank you so much for all your kindness, patience & understanding. Above all else your skills are amazing. You managed to get the end result!

*Paul*

If you have denture problems – perhaps you're uncomfortable, embarrassed when you smile, or unable to enjoy the food you like – we can help!

Our expert Dental Dental Technicians can create all types of comfortable, secure and stable dentures that will restore your smile and transform your appearance.

Strictly by appointment only. All measures possible will be taken to protect the safety of our patients with the guidelines provided.

**Book your **FREE** consultation today!**

**Derby**  
01332 894875

**Coventry**  
01530 866209

**Burton on Trent**  
01283 809679

**Wolverhampton**  
01902 275575

**www.beautifuldentures.co.uk**

### Multi Award Winning Funeral Directors

**T. J. PARRY & FAMILY**  
INDEPENDENT FUNERAL DIRECTORS  
*Our family, caring for your family*

- Private Chapel of Rest
- Grey Mercedes hearse and fleet
- Established family business
- Floral and masonry services
- 24 hour professional and personal service
- Pre-paid and pre-arranged funeral plans
- Dove Bereavement Support Group
- Horse-drawn carriage, VW hearse, motorbike hearse and alternatives available

**t: 01283 205285**  
e: [info@tjparryfunerals.co.uk](mailto:info@tjparryfunerals.co.uk)  
w: [www.tjparryfunerals.co.uk](http://www.tjparryfunerals.co.uk)  
2 Britannia House • Station Street  
Burton-upon-Trent • DE14 1AX

## LADY PLUMBER

### *A Pipe Dream*

A Pipe Dream provides a full range of plumbing and heating services, from fitting a new kitchen tap, replacing or servicing your boiler, to fixing that leak that's been bothering you for ages!

If you want a plumber or a gas engineer that you can trust, give Abi a call.

**NO CALL OUT CHARGE**  
**FREE QUOTES**  
**NO JOB TOO SMALL!**

**T: 01283 716352**  
**M: 07976 705189**  
**www.apipedream.co.uk**

**safe**  
202944

# Dad Jokes Galore!

We love Dads and the very special way that they can make their children roll their eyes with just a one-liner. Bad jokes are the purview of Dads, so here we have amassed a mighty collection to boost their already admirable repertoire in good time for Father's Day on Sunday 19th June!

- "I'm afraid for the calendar. Its days are numbered."
- "How do you follow Will Smith in the snow?" "You follow the fresh prints."
- "What did the janitor say when he jumped out of the closet?" "Supplies!"
- "What did the ocean say to the beach?" "Nothing, it just waved."
- "I only know 25 letters of the alphabet. I don't know y."
- "How does the moon cut his hair?" "Eclipse it."
- "What's the best thing about Switzerland?" "I don't know,

but the flag is a big plus."

- "I don't trust those trees. They seem kind of shady."
- "Why don't eggs tell jokes? They'd crack each other up."
- "What do you call someone with no body and no nose? Nobody knows."
- "Why couldn't the bicycle stand up by itself? It was two tired."
- "What did one hat say to the other?" "Stay here! I'm going on ahead."
- "Why didn't the skeleton climb the mountain?" "It didn't have the guts."
- "How do you make a tissue dance? You put a little boogie in it."
- "What do you call cheese that isn't yours? Nacho cheese."
- "When two vegans get in an argument, is it still called a beef?"

- "I ordered a chicken and an egg from Amazon. I'll let you know..."

- "If a child refuses to nap, are they guilty of resisting a rest?"

- "What country's capital is growing the fastest?" "Ireland. Every day it's Dublin."

- "I once had a dream I was floating in an ocean of orange soda. It was more of a fanta sea."

- "Did you know corduroy pillows are in style? They're making headlines."

- "Why did the scarecrow win an award? Because he was outstanding in his field."

- "I made a pencil with two erasers. It was pointless."

- "I'm reading a book about anti-gravity. It's impossible to put down!"

- "Did you hear about the guy who invented the knock-knock joke? He won the 'no-bell' prize."

- "I used to hate facial hair...but then it grew on me."

- "I decided to sell my vacuum cleaner—it was just gathering dust!"

- "Why can't you hear a psychiatrist using the bathroom? Because the 'P' is silent."

- "It takes guts to be an organ donor."

- "I was going to tell a time-traveling joke, but you guys didn't like it."





**DAPPER DOGS**  
RAW FOOD & ACCESSORIES

**RAW FOOD - NATURAL TREATS**  
**DOG BEDS - HARNESSSES**  
**LEADS & COLLARS**



**01283 296225**  
DAPPER DOGS - 44 LINTON ROAD  
CASTLE GRESLEY - DE11 9HS



**Stockley Park Tree Services**

**WORK UNDERTAKEN:**

- Tree Removal
- Crown Reduction
- Crown Lifting
- Deadwood Removal
- Hedge Cutting
- Hedge Laying
- Stump Removal
- Site Clearance
- Firewood

t: 01283 240224 • m: 07736928148  
[www.stockleyparktrees.co.uk](http://www.stockleyparktrees.co.uk)

# Have Your Windows Steamed Up?

**Replace the pane, not the frame!**

All glazing backed by our

**25**

**YEAR**

**GUARANTEE**

*"I really liked the fact that they were a local community run business"*

*Janet Beard*

**Which?**  
Trusted trader

We are a  
Which?  
Trusted Trader

**Social distancing in operation**

**Faulty locks, handles or hinges?**

**cloudy 2 CLEAR**  
WINDOWS

REPLACING YOUR FAILED DOUBLE GLAZING

Priority freephone  
**0800 61 21 118**  
[www.cloudy2clear.co.uk](http://www.cloudy2clear.co.uk)

**Love Your Home - Protect Your Windows - Save Money**

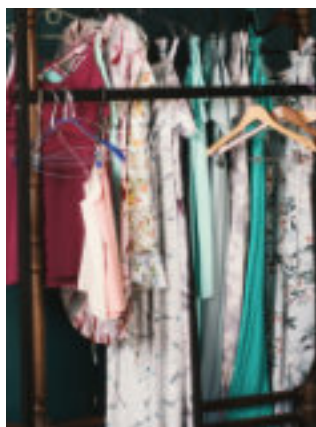
 



# Turn Old Clothes To Cash by Cash4Clothes4You

**H**ere at Cash4Clothes4You (Cash4Clothes), we buy all clothing items, and shoes, bags and belts. All items need to be clean, wearable and re-usable – no holes, paint stains or damage. Unfortunately, we cannot accept work wear or school uniform.

Our winter wear coats, jumpers, boots etc go to Eastern Europe and Poland. Our summer clothes, t-shirts, sandals, shoes etc go to Africa. On arrival, they are transported to markets and stores, where the locals can buy them, at a reasonable cost. We are a family run business, my wife and I opened our shops over 10 years ago. As



well as enabling foreign communities to access western clothing, we have helped local organisations, such as scout and guide groups, local football and other sporting teams, and church groups by

organising collections, and from local residents.

Due to the ongoing situation in Ukraine, many people have been taking their used clothing to Ukraine drop-off points. We have been advised that many of these are now unable to take any further clothes, but if you still want to support the people of Ukraine, why not bring your clothing to us and donate the cash you receive for your clothes?

We live in a world of waste. We need to re-cycle everything we can to help reduce landfill.

Thanks for your help and support.

**Cash4Clothes4You**

Bring your bags to our Burton shop  
**Best prices in the area!**

Burton Upon Trent  
Unit 2  
Minor Trading Estate  
Hawkins Lane  
Burton Upon Trent  
DE14 1QN

**YES PLEASE**

- ☒ Clean wearable clothes
- ☒ Bags, belts, hats
- ☒ Pairs of shoes

Opening hours:  
Mon, Tue, Thurs, Fri, Sat  
10am til 5pm

For enquiries or collections  
please call 01283 480711  
Free and easy parking

**NO THANKS**

- ☒ Soiled or damp clothes
- ☒ Duvels and Pillows
- ☒ Work clothes or bagged school uniform

Like us on Facebook please:  
Cash4clothes4you

**Cash4Clothes4You**

**INTERIOR DECORATOR**  
Painting and Decorating Service

**Tim Brooks**  
27 Mona Road  
Burton-On-Trent  
Staffordshire  
DE13 0UF

M: 07902025188  
E: timbrooks.1961@talktalk.net  
@decorator\_tim

Clean efficient service  
Free estimates  
Trustworthy reliable  
tradesman  
Established 1994

# SUPPORT WHEN YOU NEED IT...

FACING THE BREAKDOWN OF A RELATIONSHIP IS AN EMOTIONAL AND OFTEN CONFUSING TIME, AND SEEKING LEGAL ADVICE CAN SEEM LIKE A DAUNTING PROSPECT.

OUR FAMILY TEAM ARE ON HAND TO SUPPORT YOU THROUGH THE DIFFICULT MOMENTS IN LIFE, EXPLAINING EVERYTHING IN A PLAIN SPEAKING WAY TO HELP PUT YOUR MIND AT EASE.

Connect with us:

01283 548 282 | [info@smithpartnership.co.uk](mailto:info@smithpartnership.co.uk)

[www.smithpartnership.co.uk](http://www.smithpartnership.co.uk)

 @smithpartnership

 @smithpslp



## Architectural Design

**niche**  
architecture



Call us on 01283 499451  
[www.nichearchitecture.co.uk](http://www.nichearchitecture.co.uk)  
[enquiries@nichearchitecture.co.uk](mailto:enquiries@nichearchitecture.co.uk)

[Facebook](#) @NicheArchitectureLtd  
[Instagram](#) nichearchitecture  
[Twitter](#) nichearch

## EASY GLIDE GARAGE DOORS



**The EASY GLIDE Garage Door is an exceptional garage door system - THE BEST IN THE UK.**

Open and close the door at the push of a button from within the comfort of your car. Our automatic garage doors enhance the look of your property and have great thermal values keeping your property warmer.

Unit 11, Falcon Business Center, Hawkins Lane, Burton o Trent DE14 1SG

**01283 480 505 / 01156 719999**

[www.easyglidegaragedoors.co.uk](http://www.easyglidegaragedoors.co.uk)



We take out your old door, remove from site and replace with a new insulated electric roller door complete with 2 remote controls

**FOR ONLY £749**

Based on a white door 11ft x 6ft



# Premier Mobility THE MOBILITY CENTRE

**SALES • SERVICING • REPAIRS • Many Mobility Aids Available**  
Large selection of new and pre owned mobility scooters

Proud to announce our 5th year as a Motability dealer. Come and talk to our friendly staff about using your allowance to get you mobile with a new scooter this spring



Motability



**BURTON INDOOR MARKET • Tel • 01283 547726**

Burton Upon Trent DE14 1HA • [sales@burtonpremiermobility.com](mailto:sales@burtonpremiermobility.com)  
[www.burtonpremiermobility.com](http://www.burtonpremiermobility.com)



## SHOWERS

INSTALLED • REPAIRED • REPLACED

- Replace your bath with an easy access walk-in shower
- Cubicles - Doors - Trays
- Electric showers & power showers

Approved installer of 30 years

Call Alan Wright Showers on

**01283 815171**

**01332 290198**

## Midland Property Maintenance

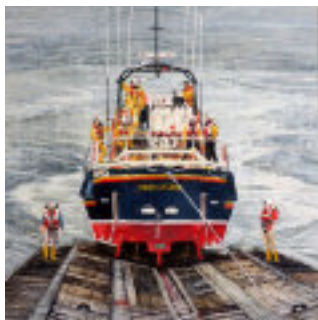
- ALL TYPES OF ROOF REPAIRS
- EXTERIOR DECORATING
- UPVC FACIAS SOFITS
- GUTTERING
- JET WASHING DRIVES PATIOS
- FACIA'S & GUTTERING

We are a family run business with over 25 years experience.

**FOR A FREE QUOTE CALL:**

**01283 310885 or 07413582565**

# Spring into Summer



Deb Walker is an elected member of the Royal Institute of Painters in Water Colours and the Royal Society of Marine Artists, both of which are based at the Mall Galleries, just off Trafalgar Square in London. To view paintings by Deb prior to visiting 'the gallery' please visit: [www.walker-art.co.uk](http://www.walker-art.co.uk)

teaches by demonstration on an individual basis. You can enquire by email: [deb@walker-art.co.uk](mailto:deb@walker-art.co.uk) or through the website Contact page for further information and / or availability.

For directions to 'the gallery' from the A515 Kings Bromley to Yoxall road, turn left at the roundabout to Hamstall Ridware and continue to turn or bear left to Blythe House Farm.

'Spring into Summer' is a mixed exhibition, featuring resident artist Deborah Walker RI RSMA, alongside ceramics by John Stroomer from Australia and jewellery by Lynn Kendall. Deb welcomes visitors to her studio gallery Thursday to Saturday, 2pm to 5pm, throughout the year.

Workshops at Ridware Arts fill up fast, but you can view the current workshop programme by visiting the website's Workshop page. We have one day watercolour and mixed media workshops as we spring into Summer; and in July we have a three day oil painting summer school. All workshops are tutored by Deb, who



## JACK JONES

ELECTRICAL

Jack Jones Electrical Limited is a family-run business offering exceptional electrical solutions to home and business owners.

- ✦ Domestic & Commercial Installation
- ✦ Electrical Maintenance
- ✦ Electrical Testing & Inspection
- ✦ CCTV & Fire Alarms
- ✦ EV Charger Installation
- ✦ Compliance Certificates



[www.jackjoneselectrical.co.uk](http://www.jackjoneselectrical.co.uk)

07508 20706527

[jack@jackjoneselectrical.co.uk](mailto:jack@jackjoneselectrical.co.uk)

**THINKING OF SELLING YOUR HOME?**



**Crew Partnership**

**Burton · Estate · Agents**

**Free Valuations from a local company  
with town centre offices**

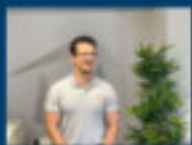
**Whether you are looking to sell your home, buy a new home, or both, we're here to help. With years of experience and so much local knowledge between us all you will be in safe hands.**

**Local knowledge | Free valuation | No Sale - No Fee  
Honest advice | 3D floor plans | Video tour  
360 degree virtual tour | Energy assessment  
Family run firm | Excellent customer service**

**Introducing our team based in our office in Burton Town Centre**



**Keith Crew**



**James Higgs**



**Jayne Crew**



**Jess Jones**



**Karen Hook**

**Contact us today to find out how we can help you!**

**01283 548548**

**BURTON@CREWPARTNERSHIP.CO.UK**

**WWW.CREWPARTNERSHIP.CO.UK**

**7 & 8 NEW STREET | BURTON ON TRENT | DE14 3QN**



**zoopla**

**rightmove**

**The Property Ombudsman**



# Rolleston Artist in Exhibition



Michael comments: "My inspiration stems from a lifelong interest in art and a period of illness in early 2018 which gave me the impetus to create my own work. I focus on abstract art as I am fascinated by the interaction of shape, space and colour and the boundless possibilities this gives across various mediums.

I tend to work organically having an idea in mind, but which often develops into something else as the creative process takes place. This is what I find exciting about abstract art – you never know what you will end up with and the end product is always open to interpretation by the viewer."

Michael will be showcasing his work at the Derbyshire Open Arts event at Banks Mill with ten other artists and work on show will include fine art, printmaking, ceramics, pottery, mixed media art, textiles and mosaics.

With free entry the studios, on Bridge Street, Derby, DE1 3LB, will be open from 10am-5pm each day.

Karen Holland, Banks Mill Co-ordinator comments: "The festival is a great opportunity for the public to visit our artists in their studios to find out about how they design and make their items and it's reassuring to know that your purchase is an original, handmade piece. Some of our

artists will also demonstrate their making techniques during the weekend and we've also put together a children's art trail to keep them engaged too."

Banks Mill is a real hive of creativity, home to artists and designer-makers with exceptional talents covering; fine art, jewellery, photography, fashion, weaving and more. Studios are available for those wanting a location for their business or productive workspace with stepped rents offering flexibility as well as training opportunities and business support.



For more information visit [www.banksmill.co.uk/darts2022](http://www.banksmill.co.uk/darts2022) or ring 01332 597866. To download a festival brochure and map visit [www.derbyshireopenarts.co.uk](http://www.derbyshireopenarts.co.uk)



# **GOLDING**

**SKIP HIRE**



- All skip sizes
- All areas
- Same day delivery
- Grab hire
- Fully licensed
- Road permits arranged



[www.golding-skips.co.uk](http://www.golding-skips.co.uk)

**BOOK ONLINE OR CALL:**

**01283 544389**

**Nicolson Way, Off Wellington Road  
Burton on Trent, Staffs DE14 2AW**



# WIN!

## Prizes from the National Brewery Centre!



For this month's competition, **FOUR** lucky readers can win a **A Set of Family Tickets to The National Brewery Centre Guided Tour including 1 Free Pint per adult and ONE lucky reader can win a Set of 4 Tickets for the Last Night Of The Proms** event 9th September 2022 from **The National Brewery Centre**.

At The National Brewery Centre you can uncover hidden brewing secrets. A unique and engaging experience awaits all country men and country women alike, to delve into the depths of Burtons past, present and future influences on the World!

Their guided tours incorporate

large elements of the original Bass Collection. Learn about the legendary Bass family and their role in the development of brewing. Beer aficionados will love this days experience! The National Brewery Centre also hosts an array of events that take place throughout the year from musical tribute acts to vintage weekends and comedy acts.

The centre also has a splendid offering of venues for hire for weddings, parties or corporate events and funeral receptions. Their spaces in the listed Victorian buildings at The National Brewery Centre provide an impressive setting for any event.

You can find more at: [www.nationalbrewerycentre.co.uk](http://www.nationalbrewerycentre.co.uk)

To enter this month's competition, all you have to do is email your name, address and daytime telephone contact number to:

[local@locallinksmedia.co.uk](mailto:local@locallinksmedia.co.uk)

Alternatively, you can post your details to:

**Local Links Media  
National Brewery Centre  
Competition  
PO Box 8049  
Burton-on-Trent  
DE14 9NQ**

The closing date for entries is the 14th of June and the winners will be announced in our July edition. Good luck to everyone who enters!



National Brewery Centre,  
Horniglow Street,  
Burton upon Trent,  
DE14 1NG

t: 01283 532 880  
[www.nationalbrewerycentre.co.uk](http://www.nationalbrewerycentre.co.uk)  
[info@nationalbrewerycentre.co.uk](mailto:info@nationalbrewerycentre.co.uk)



**SALE NOW ON! - SALE NOW ON! - SALE NOW ON!**



01283 535421  
sales@homeandtrade  
: www.homeandtrade.co.uk

Electric Street  
Burton-on-Trent  
DE14 1RQ

# Steve Frost

**Windows. Doors. Conservatories. Fascia.**

## **UPGRADE YOUR OLD CONSERVATORY ROOF FOR A NEW ALL YEAR ROOF**

Replacing your old conservatory roof to a new warm roof stops you feeling cold in winter and too hot in summer.

- Upgrade your double-glazed units to planitherm energy saving glass, with argon gas infill and warm edge spacer bar to save more heat.

- All windows, doors and conservatories are made to suit your individual taste and design.

- We are always happy to arrange viewings of past installations to see our full quality and range available.

For your free no obligation quotation contact us on:

# 01283 701 458

email: [steve@villagec.co.uk](mailto:steve@villagec.co.uk)

65 Fildem Lane, Willington, Derby, Derbyshire, DE65 6DW



## Are you happy with the care you receive?

- Do you have to pay higher rates for weekends?
- Do you have to pay higher rates for bank holiday?
- Do you regularly get different carers turning up?
- Do they come at different times than expected?

Why? Don't you deserve to be treated fairer?

At Visiting Angels East Staffordshire all this is included in the one price and we provide consistent and continuous care guaranteed.

We are a carer centric business, which means the retention rate of our carers is significantly higher than most home care companies.

Whatever support you need, we can offer you a tailored support package to allow you to continue to be independent and live your life the way you want, everyday.



Find out how a Visiting Angel can help

**Call 01283 319 400**

[www.visiting-angels.co.uk/eaststaffs](http://www.visiting-angels.co.uk/eaststaffs)  
[eaststaffs@visiting-angels.co.uk](mailto:eaststaffs@visiting-angels.co.uk)

VisitingAngels.   
QUALITY AT HOME CARE



# Slimming World

taste  
the  
freedom



Contact your local Slimming World Consultant  
and join a warm and friendly group today!

## MONDAY

**Carver Road Community Centre**

5.30pm with Gina  
Tel: 07062 161774

**Winshill Resource Centre**

5.30pm with Angela  
Tel: 07707 709525

## TUESDAY

**Stanton Village Hall**

9.30am with Stacey  
Tel: 07919 891195

**Brook House, Shobnall Road**

6.00pm with Georgina  
Tel: 07496 724715

**Barton Village Hall**

5.30pm & 7.00pm with Angela  
Tel: 07707 709525

## WEDNESDAY

**Stanton Village Hall**

5.30pm with Jo  
Tel: 07718 985979

**Rolleston Scout HQ**

7.00pm with Gina  
Tel: 07952 161774

## THURSDAY

**Branston Scout HQ**

9.00am with Stacey  
Tel: 07919 891195

**Branston Village Hall**

5.30pm & 7.00pm with Stacey  
Tel: 07919 891195

**Stretton Church Hall**

9.15am & 5.15pm with Georgina  
Tel: 07496 724715

## FRIDAY

**Brook House, Shobnall Road**

10.00am with Georgina  
Tel: 07496 724715

## SATURDAY

**Brook House, Shobnall Road**

8.00am & 9.30am with Georgina  
Tel: 07496 724715

   #SWtastethefreedom  
[slimmingworld.co.uk](http://slimmingworld.co.uk)

*Slimming*<sup>®</sup>  
WORLD

touching hearts, changing lives



# A Hidden Gem in Barton



**T**ucked away near the High School, on Dunstall Road, is a village facility you might have overlooked or forgotten about!

Barton-under-Needwood Library became a Community Managed Library in 2016, staffed by a willing and friendly group of volunteers. It is overseen, and volunteers are supported, by the local Midlands Partnership NHS Foundation Trust, which sees the library as an important

benefit for our local community. SCC Library Services continue to provide the books and facilities, plus volunteer training.

The community was very supportive of the change; people were delighted to hear that their library was to remain open!

We have several groups who meet here regularly, including Family History, Reading Group and Knit and Natter for

adults, and Storytime and Children's Crafts for our younger visitors. We hope to introduce more groups in the future.

We also offer a Home Reading Scheme for any readers unable to visit the library themselves.

## **Our opening hours are:**

Mon, Wed & Thurs: 10am-5pm

Frid: 10 am to 2 pm

Sat: 10 am to 1 pm

We are always keen to hear from anyone who would like to become a volunteer; you will be given full training and lots of support.

Why not pay us a visit? It's free and easy to join the library!

## Local Family Funeral Directors

Burton, Barton-under-Needwood, Swadlincote & Derby

30 years' experience supporting families through their loved one's arrangements

Full range of services; stonemasons, flowers, grey & black fleet, or choice of vehicles

Funerals & Pre-payment to suit individual needs

Dedicated, caring & professional team

Funerals from £1584

Branches in Burton, Barton, Swadlincote

# M

**T: 01283 562299**

[www.murraysfunerals.co.uk](http://www.murraysfunerals.co.uk)

 find us on facebook

**MURRAY'S**



**BUSINESS AWARDS.CO.UK**  
**2021** EAST STAFFORDSHIRE SOUTH DERBYSHIRE

**WINNER**



# Virtual & Outdoor Events What's On Guide!

## MONDAY 23RD MAY

### Beginners Watercolour - Tutbury

Every Monday at Tutbury Village Hall from 10am - 12 noon. Ideal for anyone who has never painted before. For details or to enrol contact Ann on 07816 118776. Admission by prior registration only. [www.artmoves.co.uk](http://www.artmoves.co.uk)

## TUESDAY 24TH MAY

### Barton Arts

Every Tuesday 10 til 12.30 at Barton Village Hall, Casual Arts and crafts, 'Bring your thing', and join our friendly chatty group, all abilities, just bring your thing. £15 per month. Contact Judith Freeman for more information [judithmick.f@hotmail.co.uk](mailto:judithmick.f@hotmail.co.uk) / 01283 550344

### Marstons Club - Over 50s

Over 50s Bingo every Tuesday afternoon. 1 'til 3pm. For more information contact Christine Adams on: 01283 299833

## WEDNESDAY 25TH MAY

### Priory Art Group

Every Wednesday morning 9.30 to 12. We are a small friendly group of artists meeting at the Priory Centre, Church Road, Stretton. New members always welcome. Contact Sandra 01283 329743 or call in and see us.

## THURSDAY 26TH MAY

### Tahitian Dance with Hinatea

Free event, every Thursday, starts 6pm. The focus is on feeling good about ourselves, being kind with ourselves and having fun. [www.eventbrite.co.uk/e/tahitian-dance-with-hinatea-online-tickets-148335865567?aff=ebdssbonlinesearch](http://www.eventbrite.co.uk/e/tahitian-dance-with-hinatea-online-tickets-148335865567?aff=ebdssbonlinesearch)

## FRIDAY 27TH MAY

### Release your inner Strictly!

Every Friday - no partners required for any class - Solo dancing - Dance latin steps in line - learn cha-cha, salsa, mambo, rumba, merengue, samba, waltz, quickstep etc. Intermediate class 9.45-10.45am £5.00. Beginner 11.00-11.45am £4.00. Venue: Priory Centre, Church Road, Stretton DE13 0HE. For more information call 07598159744 or email [larhiney@hotmail.com](mailto:larhiney@hotmail.com) to book a place

### Cribbage Club

Stretton Bowls Club, every Friday at 7.30pm

## SATURDAY 28TH MAY

### Spirit Café

Free event. Every Saturday at 7.30pm. Live Spiritual Readings with our team. A great no pressure way to get insight, healing, and perspective. [www.eventbrite.co.uk/e/free-spirit-cafe-online-free-spiritual-readings-more-tickets-134687009471?aff=ebdssbonlinesearch](http://www.eventbrite.co.uk/e/free-spirit-cafe-online-free-spiritual-readings-more-tickets-134687009471?aff=ebdssbonlinesearch)

## SUNDAY 29TH MAY

### Vinyasa Flow Yoga

Every Sunday 10am. Contribution £5-£15. My yoga is for everyone. [www.eventbrite.co.uk/e/sunday-vinyasa-flow-yoga-live-online-tickets-100825465682?aff=ebdssbonlinesearch](http://www.eventbrite.co.uk/e/sunday-vinyasa-flow-yoga-live-online-tickets-100825465682?aff=ebdssbonlinesearch)

## MONDAY 30TH MAY

### Kundalini Yoga & Gong Bath

Free event. Every Monday. Starts 7pm. Evening yoga class designed to inspire and give you the tools to transform your life and those around you. Open to all levels. [www.eventbrite.co.uk/e/kundalini-yoga-and-gong-bath-online-tickets-55890355558?aff=ebdssbonlinesearch](http://www.eventbrite.co.uk/e/kundalini-yoga-and-gong-bath-online-tickets-55890355558?aff=ebdssbonlinesearch)

## TUESDAY 31ST MAY

### Online Life Drawing

Free event. Donations welcome. Every Tuesday at 7pm and Friday at 10am. Our life drawing sessions are perfect whether you're a complete beginner or the next Picasso! [www.eventbrite.co.uk/e/online-life-drawing-with-brixton-life-drawing-tickets-117373428083?aff=ebdssbonlinesearch](http://www.eventbrite.co.uk/e/online-life-drawing-with-brixton-life-drawing-tickets-117373428083?aff=ebdssbonlinesearch)

## WEDNESDAY 1ST JUNE

### Worcestershire County Show

1st and 2nd June. Agriculture is very much at the heart of this Show with classes for cattle, sheep, pigs, poultry and Boer goats. However, as the Show takes place during the late May half-term holiday the family visitor is catered for with breath taking Main Ring events, a full programme of arena events in the Country Pursuits Arena and a range of children's activities from climbing walls to Punch and Judy Shows.

### Barton WI

Meeting the 1st Wednesday of every month at 7.30pm at St James's Hall Barton. For more information email [pennycarthy@hotmail.co.uk](mailto:pennycarthy@hotmail.co.uk)

## THURSDAY 2ND JUNE

### Swadlincote Beacon Lighting

At Eureka Park the event will involve the Town Crier, 1211 Squadron (Swadlincote) Air Training Cadets, the Gresley Male Voice Choir, local churches, voluntary groups, residents and the general public. The beacon will be lit and a short service of thanksgiving will be held

## FRIDAY 3RD JUNE

### Pick'n'Mix Craft Session

Free Event every Friday. Starts 10am. Weekly arts and crafts session for young children, hosted by Shoe Lane Library. [www.eventbrite.co.uk/e/picknmix-tickets-145439957829?aff=ebdssbonlinesearch](http://www.eventbrite.co.uk/e/picknmix-tickets-145439957829?aff=ebdssbonlinesearch)

## SATURDAY 4TH JUNE

### Weekly Mandarin Corner

Free event. Every Saturday. Starts 2pm. Informal conversation sessions at two different levels (Beginner - Intermediate and Intermediate - Advanced) that enable you to get together with fellow classmates, make new friends and discuss Chinese language and culture in a relaxed, friendly environment. [www.eventbrite.co.uk/e/weekly-mandarin-corner-tickets-135709200873?aff=ebdssbonlinesearch](http://www.eventbrite.co.uk/e/weekly-mandarin-corner-tickets-135709200873?aff=ebdssbonlinesearch)

## SUNDAY 5TH JUNE

### Intro to Coding Workshop

Free event. Every Sunday. Starts 1pm. This workshop is intended for those who have little or no experience in coding and want to find out if a career in web development is right for them. [www.eventbrite.co.uk/e/intro-to-coding-workshop-tickets-103241098906?aff=ebdssbonlinesearch](http://www.eventbrite.co.uk/e/intro-to-coding-workshop-tickets-103241098906?aff=ebdssbonlinesearch)

## MONDAY 6TH JUNE

### Drink & Draw

Free event. First Monday of the Month. Starts 7pm. Drink&Draw is a casual event, hosted online every first Monday of each month. [www.eventbrite.co.uk/e/drinkdraw-2021-spring-zoom-edition-tickets-138439567473?aff=ebdssbonlinesearch](http://www.eventbrite.co.uk/e/drinkdraw-2021-spring-zoom-edition-tickets-138439567473?aff=ebdssbonlinesearch)

## TUESDAY 7TH JUNE

### Tuesdays Art Class

Every Tuesday morning 10am-1pm, during term time. Suitable for beginners and improvers. £18 per session, or £15 per half-term in advance. Newcomers taster session £15. To book your place please email [helentarrat@gmail.com](mailto:helentarrat@gmail.com) or phone or text 0779122888.

# ...helping you stay safe.

## WEDNESDAY 8TH JUNE

### A Climate of Change

Free event every Wednesday. Starts 4pm for 8-15yrs, 6pm for 16-24yrs. A unique opportunity to express themselves through music and the creative arts, to explore how the environment and social culture is changing around them. [www.eventbrite.co.uk/e/a-climate-of-change-creative-sessions-for-young-people-ages-16-24-yrs-tickets-141594540081?aff=ebdssbnonlineasrch](http://www.eventbrite.co.uk/e/a-climate-of-change-creative-sessions-for-young-people-ages-16-24-yrs-tickets-141594540081?aff=ebdssbnonlineasrch)

## THURSDAY 9TH JUNE

### Coffee at the Castle

Free event, every Thursday. Starts 11am. A friendly results driven online networking event. [www.eventbrite.co.uk/e/virtual-coffee-at-the-castle-tickets-126994992441?aff=ebdssbnonlineasrch](http://www.eventbrite.co.uk/e/virtual-coffee-at-the-castle-tickets-126994992441?aff=ebdssbnonlineasrch)

## FRIDAY 10TH JUNE

### Latin-in-Line Dance Class

A new class at a slower pace - Fridays 12.00-12.45pm at the Priory Centre, Church Road, Stretton, Burton on Trent DE13 0HF - £4.00 per class - please book with Lorraine on 07598159744 or for more details about the class.

## SATURDAY 11TH JUNE

### Electronics Club For Children

Free event. Every Saturday, starts 6pm. 1 hour session every weekend on Electronics during weekends (delivered through Zoom). Each weekly session will have unique content and will build on the knowledge from the previous sessions. [www.eventbrite.co.uk/e/electronics-club-for-children-weekend-session-tickets-135845482495?aff=ebdssbnonlineasrch](http://www.eventbrite.co.uk/e/electronics-club-for-children-weekend-session-tickets-135845482495?aff=ebdssbnonlineasrch)

## MONDAY 13TH JUNE

### Burton Prostate Cancer Support Group

Every second Monday of each month at the Scout headquarters in Rolleston on Dove DE13 9AB, meetings start at 7pm to 9pm. Everybody is very welcome, Tea, coffee and cake. Contact details email: [burton.prostate.cancer.support@gmail.com](mailto:burton.prostate.cancer.support@gmail.com) Tele: 07478 88957

### The Creative Corner

Free event, every Monday. Starts 7pm. Would you like to dedicate an hour out of your week to make that thing you still haven't made? Do you need a little extra encouragement? [www.eventbrite.co.uk/e/the-creative-corner-tickets-139512835647?aff=ebdssbnonlineasrch](http://www.eventbrite.co.uk/e/the-creative-corner-tickets-139512835647?aff=ebdssbnonlineasrch)

## TUESDAY 14TH JUNE

### Tai Chi Classes

Free event, every day. Starts 10am, 3pm or 7pm. The class starts with warming up exercises, deep breathing or Tao Yin and Kai Men Qigong which opens the energy channels. Tai Chi dance concentrating on the first ten moves. [www.eventbrite.co.uk/e/lock-down-tai-chi-lee-style-online-global-daily-classes-registration-104447912518?aff=ebdssbnonlineasrch](http://www.eventbrite.co.uk/e/lock-down-tai-chi-lee-style-online-global-daily-classes-registration-104447912518?aff=ebdssbnonlineasrch)

## WEDNESDAY 15TH JUNE

### Photography for Children

Free event, every day. Starts 7pm. Little eyes, Big stories A photography course for children aged 6+ to encourage them to think creatively and use what they have around the house. [www.eventbrite.co.uk/e/online-photography-course-for-children-tickets-155498944529?aff=ebdssbnonlineasrch](http://www.eventbrite.co.uk/e/online-photography-course-for-children-tickets-155498944529?aff=ebdssbnonlineasrch)

## FRIDAY 17TH JUNE

### Latin In-line Dancing

Get fit, lose weight, have fun! Learn cha-cha, salsa, mambo, rumba, merengue, samba, waltz, quickstep every Friday. Advanced class 9.45-10.45am £5.00, Intermediate class 11.00-11.45am £4.00, Beginner class 12.00-12.45pm £4.00. Venue: Priory Centre, Church Road, Stretton DE13 0HE. No partners required for any class - Solo dancing - Ring 07598159744 or email [larhiney@hotmail.com](mailto:larhiney@hotmail.com) for more details

### Abstract Art Workshop

Donations welcome. Every Friday. Starts 7pm. This workshop is for everyone who wants to relax, who feels isolated with lockdown and wants to enjoy art and explore new ideas. Children, adults, families, all welcome [www.eventbrite.co.uk/e/abstract-art-workshop-tickets-134217729843?aff=ebdssbnonlineasrch](http://www.eventbrite.co.uk/e/abstract-art-workshop-tickets-134217729843?aff=ebdssbnonlineasrch)

## SATURDAY 18TH JUNE

### Reduce Procrastination Workshop

Free event, every day. Starts 7pm. Join this free 1-to-1 workshop to better understand how you can overcome procrastination and fatigue, in order to maintain sustainable high performance and consistency towards your business and life goals. [www.eventbrite.co.uk/e/how-to-reduce-procrastination-and-sustain-high-performance-tickets-134389696199?aff=ebdssbnonlineasrch](http://www.eventbrite.co.uk/e/how-to-reduce-procrastination-and-sustain-high-performance-tickets-134389696199?aff=ebdssbnonlineasrch)

## SUNDAY 19TH JUNE

### Intro to Coding Workshop

Free event. Every Sunday. Starts 1pm. This workshop is intended for those who have little or no experience in coding and want to find out if a career in web development is right for them. [www.eventbrite.co.uk/e/intro-to-coding-workshop-tickets-103241098906?aff=ebdssbnonlineasrch](http://www.eventbrite.co.uk/e/intro-to-coding-workshop-tickets-103241098906?aff=ebdssbnonlineasrch)

## MONDAY 20TH JUNE

### Stapenhill WI

Meet every 3rd Monday of the month from 10am-12pm at Emmanuel Church in Stapenhill with speakers' crafts and outings.

### Monday Meditation

Free event. Every Monday, starts 6.30pm. A free meditation session, online through Zoom, every week. I provide this as a free, spiritual practice to anyone who wants to practice meditation, and pranayama, as a gift. [www.eventbrite.co.uk/e/free-monday-meditation-live-online-tickets-100830191818?aff=ebdssbnonlineasrch](http://www.eventbrite.co.uk/e/free-monday-meditation-live-online-tickets-100830191818?aff=ebdssbnonlineasrch)

## COMPETITION WINNERS

Congratulations to our **Conkers** competition winners:

**Mrs. V. Bestall, Stretton**  
**Mrs. Benning, Barton**

Look out elsewhere in **LOCAL LINKS** this month to win **Tickets from The National Brewery Centre**

## LAST MONTH'S SUDOKU PUZZLE SOLUTION

6	1	8	4	2	3	9	5	7
2	5	4	1	7	9	6	3	8
3	9	7	6	5	8	1	2	4
1	7	9	3	8	5	2	4	6
5	4	3	9	6	2	7	8	1
8	6	2	7	4	1	3	9	5
4	2	6	8	3	7	5	1	9
9	8	5	2	1	6	4	7	3
7	3	1	5	9	4	8	6	2



# Claim **£250** off your new Ford

Simply by showing our staff this advert



**T.C. Harrison Ford**  
There's No Comparison

**01283 524 624**

Horninglow Street, Burton, DE14 1NR

For more information  
visit **tch.co.uk**

Model shown is a Puma ST, models available for Test Drive may vary. T.C. Harrison Ford Limited, Bedford House, 180 Street, Belper, Derbyshire, DE18 3HH acts as a credit broker in relation to financial products and not a lender. We work with a number of carefully selected credit providers who may be able to offer you finance for your purchase. We are only able to offer finance products from these providers who may reward us for introducing you to them. T.C. Harrison Group Limited is authorised and regulated by the Financial Conduct Authority. FCA Reg No. 12523



**Stuart Mobility**  
Reliable Quality Comfort



Tel: **01283 704071**  
**www.stuartmobility.co.uk**

- Specialists in Rise and Recline Chairs
- 5 Year Domestic Warranty
- British Manufacturers
- Delivery and Installation Included

You are also welcome to view our range of chairs in our Burton Showroom by making an appointment on the number above.






**Tiny Toes**  
East Staffordshire  
Children's Centre  
Waterloo Street  
Burton on Trent  
Staffordshire  
DE14 2NJ

- Staffed by fully qualified, experienced, dedicated professionals in childcare.
- **FREE** places available for 2\*, 3 and 4 year olds
- 'Good' OFSTED report.
- Meals freshly prepared on site
- 30 free hours funding accepted

**SPECIAL OFFER!**  
**BABIES ONLY\***

One month free childcare for 0-2 year olds.  
(Terms & conditions apply)

For more information call  
Manager Christine Leeman on:  
Telephone - 01283 741343 or  
Email - [eaststaffs@tinytoez.com](mailto:eaststaffs@tinytoez.com)  
[www.tinytoez.com](http://www.tinytoez.com)

# The Story of Bass

**T**he Story of Bass: The Rise and Demise of a Brewing Great by Harry White is a new book on the brewing heritage of Burton. A real local treasure!

This book tells the story of Bass, which during the mid-1800s grew from a small provincial brewery into the world's largest ale brewer. Spanning 230 years, the story is set against a backdrop of changing social attitudes, economic conditions and government regulations, and relates how all these various factors affected the brewing industry. The book also tells the story of those brewing companies, ranging from Scotland, the north of England

and Midlands, to London, which during the 1960s merged to form what became Bass Charrington – at that time the UK's largest brewing company. Key to the story are the individuals and personalities who played their part in the formation of what was the dominant player in the UK brewing industry during the latter half of the twentieth century.

Packed with rare and previously unpublished images, and authored by the chairman of the National Brewery Heritage Trust, this is an essential read for anybody interested in the history of beer and brewing.

This book is the definitive story of the famous British brewing company and an iconic beer brand -Bass.

You can get your hands on a copy from [www.amberley-books.com](http://www.amberley-books.com)





- New Builds
- Home Extensions
- Replacement Roofs - Strip and Re-Tiling older properties
- Repairs and Maintenance
- Conservation and Heritage works

**CALL US FOR A QUOTATION**  
**ON: 01283 743773 or 07772 188385**



SUITE 2 ANGLESEY HOUSE, ANGLESEY ROAD, BURTON ON TRENT, STAFFS, DE14 3NT  
[www.advancedsiteservices.co.uk](http://www.advancedsiteservices.co.uk) Email: [advancedsitemaintenance@gmail.com](mailto:advancedsitemaintenance@gmail.com)

# ***Tipppers***



## Daily deliveries to Burton

Your **One-Stop-Shop** for your building needs

**Blocks • Bricks • Metalwork • Building Chemicals • Cement & Aggregates**  
**Damp Proofing • Floor Levelling Compounds • Insulation**  
**Lintels & Padstones • Plaster & Dry lining • Wall Ventilation**  
**• Landscaping Range • Timber & Sheet Materials**

## Services we offer

**Brick Matching • FREE 3D Kitchen and Bathroom Design**  
**Underfloor Heating Calculation • Roofing Take Off Service**  
**Fast Local Delivery • Drawing Take Off Service • Thousands of Products In-Stock**



**Public and Trade welcome**  
**www.tipppers.com | 01283 904745**





# Beer Day Britain

**T**here are many things to celebrate throughout the year, but we feel few are more important than this one! Particularly with Burton being the UK's home of brewing! June 15th is officially 'Beer Day Britain'.

Who doesn't love a cold beer? Did you know that there are several styles of beer that originated in the UK?

## Bitter

Bitter belongs to the pale ale beer style and can have a great variety of strength, flavour and appearance, from dark amber to a golden summer ale. Bitter predominantly gets its flavour from the bittering hops used early in the brewing process with fewer 'aroma' hops used.

## Mild

Mild ale is a type of ale, with a predominantly malty flavour. Modern mild ales are mainly dark-coloured.

## Brown Ale

Brown ale is a style of beer

with a dark amber or brown colour. The term was first used by London brewers in the late 17th century to describe their products. This beer is brewed from brown malt.

## Old Ale

In London especially, Burton was a synonym for old ale. Old ale is a form of strong ale. The term is commonly applied to dark, malty beers in England, generally above 5% ABV

## Stout

Stout is a dark beer with a number of variations, including dry stout, oatmeal stout, milk stout, and imperial stout.

The first known use of the word stout for beer, was in 1677 referring to the beer's strength. The name porter was first used in 1721 to describe a dark brown beer. Because of the huge popularity of porters, brewers made them in a variety of strengths. The stronger beers, typically 7% or

8% alcohol by volume (ABV), were called "stout porters", so the history and development of stout and porter are intertwined

## Porter

Porter is a style of beer that was developed in London, England, in the early 18th century. It was well-hopped and dark in appearance due to the intense roasting of the malted grains. The name originated from its popularity with street and river porters.

The popularity of porter was significant. It became the first beer style to be brewed around the world and the famous pint of Guinness was originally called 'Extra Superior Porter' until renamed 'Extra Stout' in 1840.

## India Pale Ale

The style of pale ale which became known as India pale ale was widespread in England by 1815, and would grow in popularity, notably as an export beer shipped to India. In the early 1800s several Burton breweries lost their export market in Europe, Scandinavia and Russia when the Napoleonic blockade was imposed, and Burton brewers sought a new export market for their beer in India.

So enjoy a cool Burton pint this June 15th and find out more at:

[www.beerdaybritain.co.uk](http://www.beerdaybritain.co.uk)





**TOP**  
FURNITURE

VISIT US AT STATION ROAD, UTTOXETER, ST14 8AX  
WWW.TOPFURNITURE.CO.UK • TEL - 01889 560999



# PEGASUS SCHOOL

part of the **SENAD Group**

Caldwell, Derbyshire DE12 6RS

Call today on 01885 488 096 Ext 12103!



Scan me!

## NOW HIRING!

**Pegasus School is looking for Support Workers.**

- Great training and support
- Opportunities for internal progression
- Flexible shift patterns
- The opportunity to make a difference to someone's life and wellbeing

[senadgroup.com/careers](http://senadgroup.com/careers)








# Perfect Companions *by Tim Brooks*



**T**his time of year, many keen gardeners all over Britain cast their minds over to the south east of England and to a certain part of London...Chelsea!

Yes it's time for the RHS Chelsea flower show from May 24th-28th, a utopia of plants of all shades of colours and sizes, brought together in showpiece gardens and marquee tents, attended always by celebrities and royals, with many exhibitors hoping for the elusive gold medal for best garden in show. It is one of the big highlights of the gardening year.

This year the showgardens include a "rewilding of britains landscape", which features a stream, set to resemble a natural one inhabited by beavers, complete with woodsticks, tree debris, shrubs of hawthorns, hazel and maple, just as was the successful area in the south west, where beavers were introduced back into the wild. So it is inspired by that.

Showgardens include a "textile garden", "the mind garden", "swiss garden", a

"horticultural science garden" in the great pavilion and much more to entice the thousands visiting the event...not forgetting the hospitality tents!

Whilst buying plants at these show events, consider what may be useful to grow alongside your vegetables in your own veg patch at home or allotment plot. It's easy to overlook "companion planting", these are flowers or herbs that are beneficial to all vegetables.

For instance...

- Tomatoes and peppers, growing basil next to them repels flies and mosquitos and white fly, at the same time helping to increase yields.

- Marigolds too, planted between tomatos give the same effect as Basil in deterring pests. Marigolds of course attract ladybirds, that eat the aphids, so grow plenty of those on your vegetable patch.

- Carrots should be grown next to onions, as they help keep away carrot fly. Onions also scare away aphids, so plant those near aphid prone veggies.

- Planting mint among lettuce can help deter slugs or set chives or garlic to repel aphids too.

- Strawberries benefit by

having plants like borage, spinach, beans and marigolds near them. Beans of course release nitrogen into the soil which helps plants grow well.

- Fruit bushes are happiest when they have

sweet peas, beans,, garden peas around them. Nitrogen in the soil helps the bushes grow healthily.

- G r o w flowering herbs near pumpkins, squashes and courgettes, as you need pollinators to attract bees. Unless they get pollination, you will not get a good crop of fruits off them. We need bees in gardens, so lots of flowers are essential.

- Grow calendulas next to brassicas, they help to keep away aphids and attract the much needed ladybirds and hoverflies too.

- Swiss chard benefits having the white flowering bedding plant alyssum near it, the hoverflies control the aphid population.

Companion planting stops the need to use pesticides, which kill the bees and ladybirds, that we really do need on our gardens. Nature can help in a big way, without resorting to chemicals, which are so harmful to the environment.

Happy gardening!



# WE COLLECT WASTE

## SKIP ALTERNATIVE

**NOT ENOUGH RUBBISH OR ROOM FOR A SKIP?**

We load our vans, labour included - Bespoke prices for your load

**Single Items can be collected  
from as little as £30.00**



+



**1/4 Load £120**

Labour: 30 Minutes

Max Weight: 250KG

Equivalent to: 20 Black bin bags



+



**1/2 Load £200**

Labour: 50 Minutes

Max Weight: 750KG

Equivalent to: 60 Black bin bags



+



**Full Load £280**

Labour: 60 Minutes

Max Weight: 1000KG

Equivalent to: 80 Black bin bags

*\*all prices are subject to VAT*

**Any additional labour required will be quoted as extra  
where necessary**

**Text or WHATSAPP a picture of your waste today to  
confirm your load**

# 07930719096

For all other waste enquiries call us on:

**01283 544389**

**GOLDING**  
SKIP HIRE



Nicholson Way, Off Wellington Road, Burton on Trent, Staffs, DE14 2AW

[www.golding-skips.co.uk](http://www.golding-skips.co.uk)

# Kitten Season

by Derby Cats Protection

**D**on't let kittens have kittens! Derby and District Branch of Cats Protection is offering to neuter and/or spay your cats for just £10 per cat if you are in receipt of benefits or earning less than £20,000 per annum.

If you aren't on any benefits but are still struggling, please still contact us on our Catline on 01332 206956 or email [enquiries@derbybranch.cats.org.uk](mailto:enquiries@derbybranch.cats.org.uk)

Contact us also if you have a stray cat problem in your area. [www.cats.org.uk/derbydistrict](http://www.cats.org.uk/derbydistrict)



Looking to advertise?

Your advert could appear in  
*Local Links*  
for as little as

**£51**

Call us now on 01283 564608 to advertise

ALL SOCIAL DISTANCING AND HYGIENE MEASURES WILL BE ADHERED TO AS SET OUT BY THE GOVERNMENT

## Dry Carpet Cleaning

Picture this... in your home

Nice Fresh Clean

Upholstery on

Leather • Suede • Fabric

**zero dry time**

Dry Carpet, Upholstery & Hard Floor Cleaners

- Removes spills & spots
- Sanitise & deodorise
- Deep cleans & lifts carpet pile

Locally based

You can call us for FREE on

**0800 180 49 30**

[zerodrytime.com](http://zerodrytime.com)

**GET ONE AREA CLEANED, SAVE  
50% ON ADDITIONAL AREAS**

**+ FREE STAIN GUARD**

We also clean hard floors, tiles inc Grout, Karndean, Amtico & Wooden Floors - ASK FOR A QUOTE

## LOCAL LINKS SUDOKU

	8				3			
9	7	4	8					
2				9				
3	6				5	8		
	4						9	
		8	9				1	4
				1				5
					6	1	4	3
			5				2	

Sudoku is a logic puzzle where you follow one simple rule:  
Simply fill in the boxes so that the nine rows, the  
nine columns, and the nine 3x3 squares  
all contain every digit from 1-9.

ELL-57-58

## PAINTER & DECORATORS

- High Class Finish
- Competitive Prices
- Friendly, Reliable Service
- Free Quotations



Contact Michael



**07979 921895**



**01283 362279**

e-mail: [mgdecorator@yahoo.co.uk](mailto:mgdecorator@yahoo.co.uk)

44 Hurst Drive, Stretton, Burton upon Trent, DE13 0ED

## CURBOROUGH HALL FARM COUNTRYSIDE CENTRE

Just a stones throw away from Lichfield, our Centre is home to many brilliant independent businesses, retailers, artists and designers. As well as visiting local favourites, including the award winning Cheese, Gin & Ale Barn and Bradbury's Farm Shop & Butchery, there's also the opportunity for a sit down and a bite to eat in Thyme Kitchen. **Come and see us soon!**

Centre Opening Hours: 10am - 4pm Tuesday to Sunday.  
Located 20 minutes from Burton upon Trent.  
Find us at **WS13 8ES**.

To find out more & for a full list of all of our businesses, visit: [curboroughcountrysidecentre.com](http://curboroughcountrysidecentre.com)





# PENTAGON BURTON

Your Local **Vauxhall** & **PEUGEOT** Main Dealer



## MOT TEST SPECIAL OFFER



FOR ONLY **£39**

Present a copy of this advert to redeem this offer.

**PLUS** **SERVICING** FROM ONLY **£99**

We offer While You Wait appointments including **Free Refreshments.**

There are some fantastic reasons to use Pentagon, such as a **Free Car Wash on all vehicles\***, **Free Courtesy Cars\*** and **Free Collection and Delivery within 10 miles.\*** There is no better place to take care of your car.



**Pentagon**  
Motor Group

[www.pentagon-group.co.uk](http://www.pentagon-group.co.uk)

Derby Road,  
Burton on Trent,  
DE13 0DF  
**01283 888847**

\* Offers end 30/06/2022.  
Ask for more details.

# Properties Wanted



We have buyers who missed out on these properties so if you are thinking of selling please get in touch!



**Holland park**



**Park Close**



**Statfold Lane**



**Efflinch Lane**



**St Peter's Road**



**Meadow Fields**

Get Your **FREE** Online Valuation Report  
Call 24/7: **01283 247 076** or visit:  
**EweMove.com/BartonUnderNeedwood**

EweMove respects any existing sole agency agreement already in place with another agent.